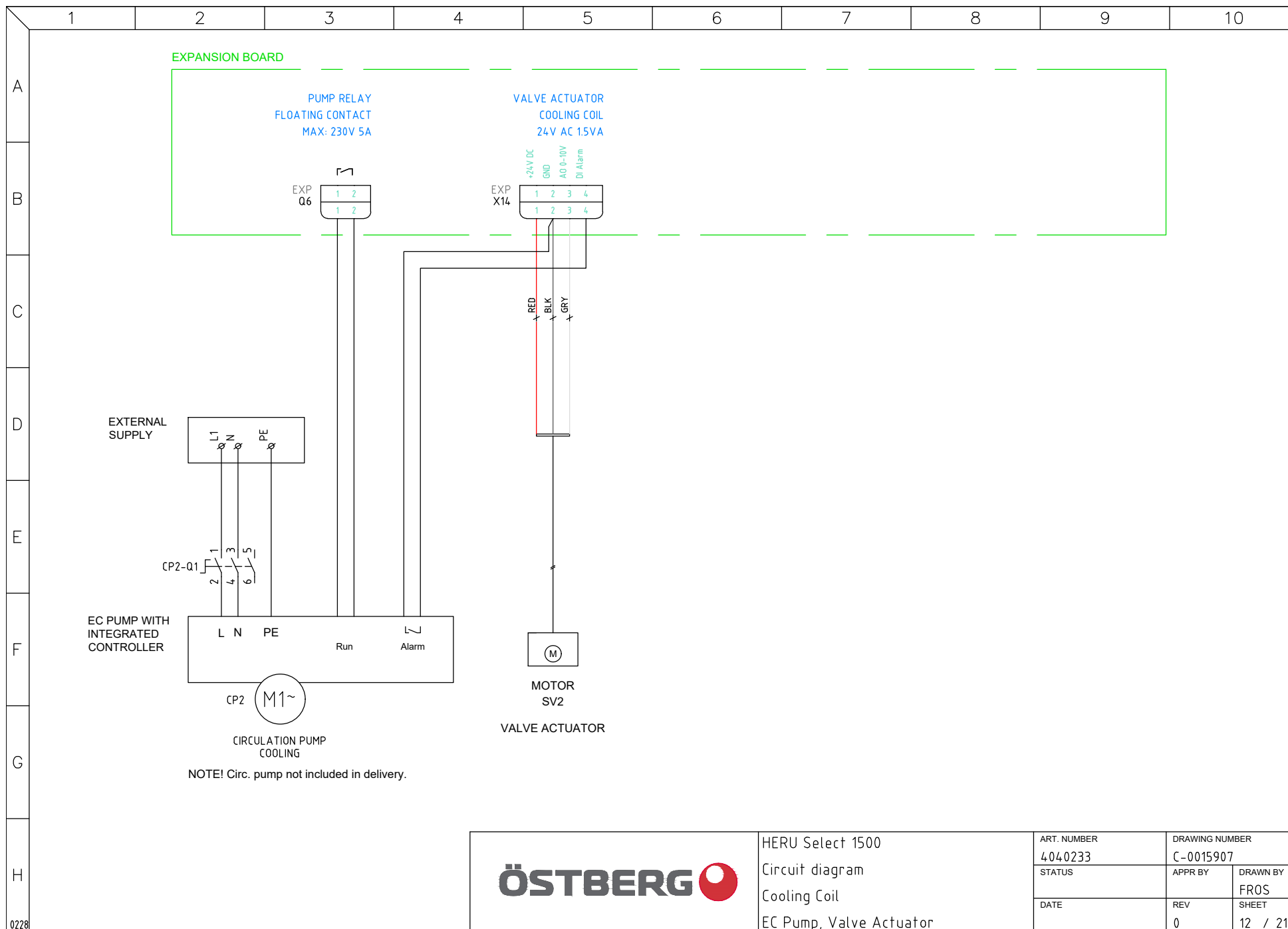
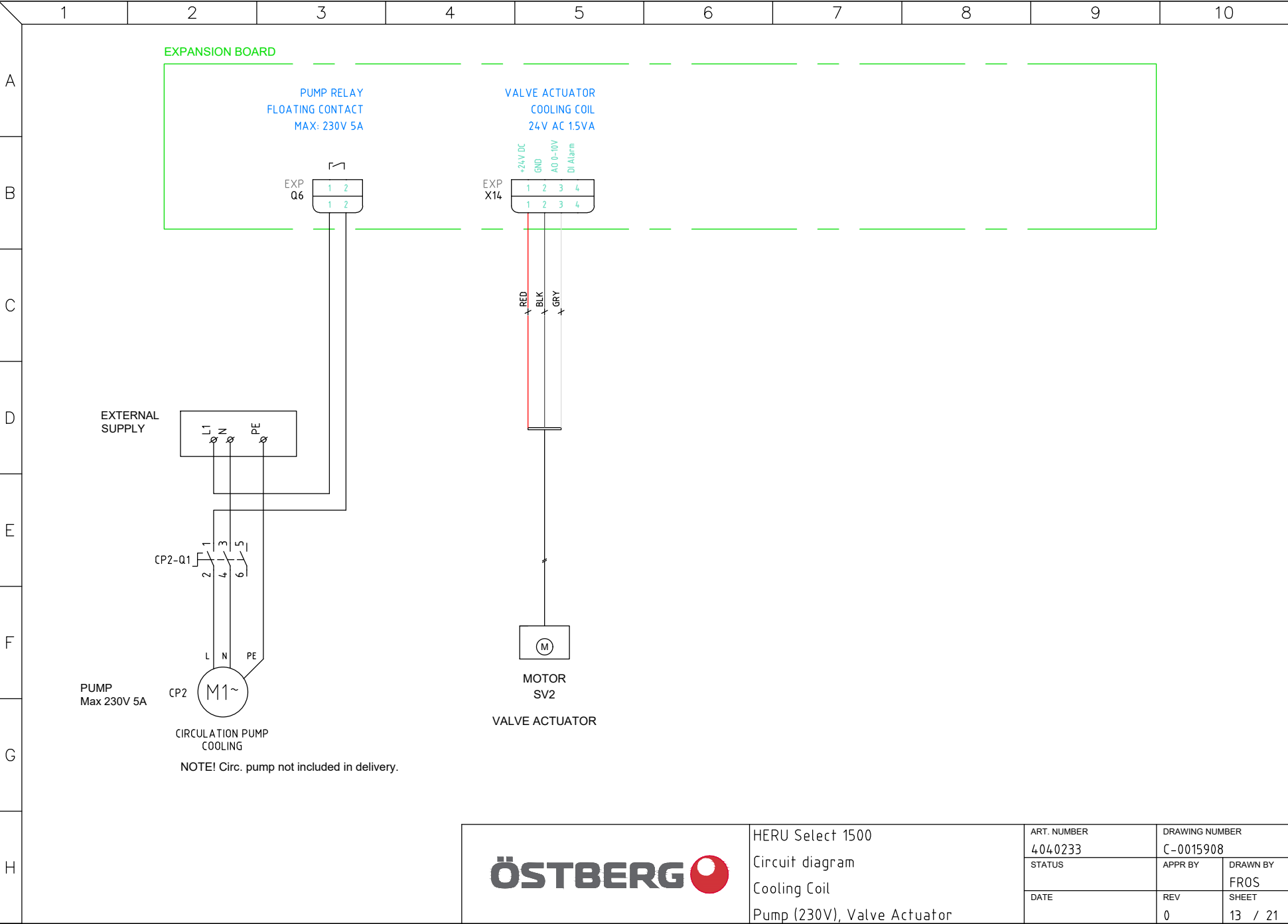


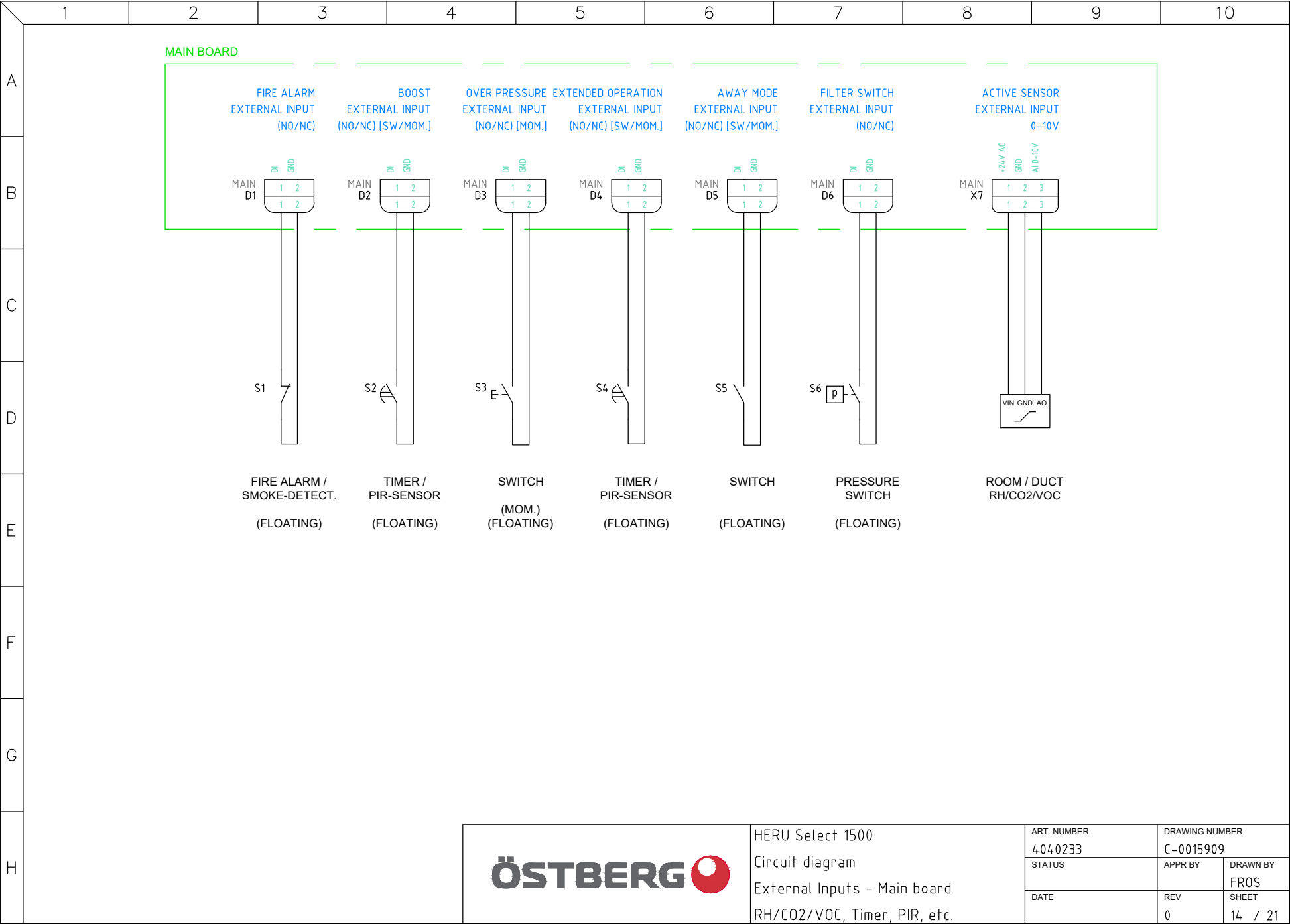
**ÖSTBERG**

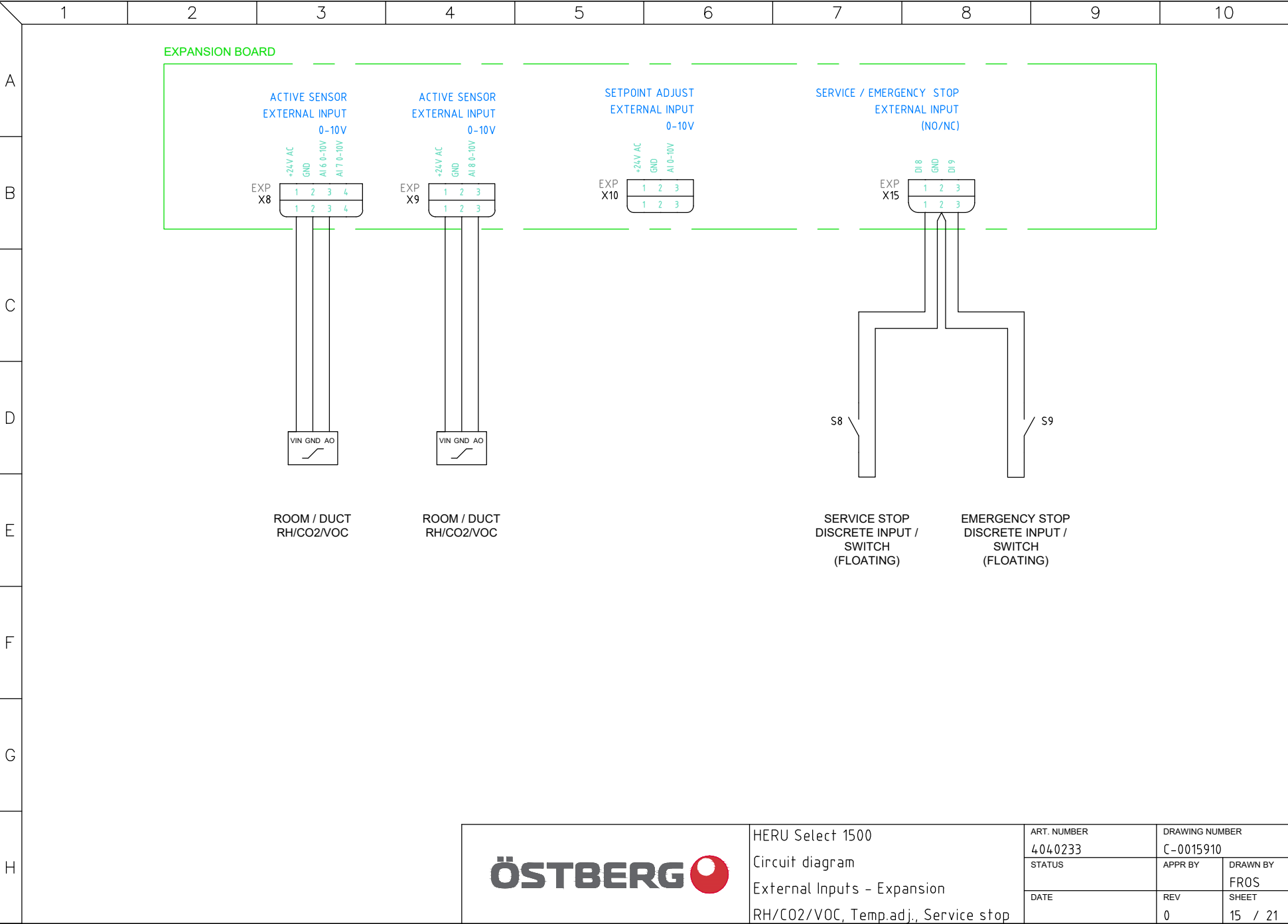
HERU Select 1500  
Circuit diagram  
After heater - Water - Left  
Pump (230V), Valve Actuator

ART. NUMBER 404.0233	DRAWING NUMBER C-0015906	
STATUS	APPR BY	DRAWN BY FROS
DATE	REV 0	SHEET 11 / 21



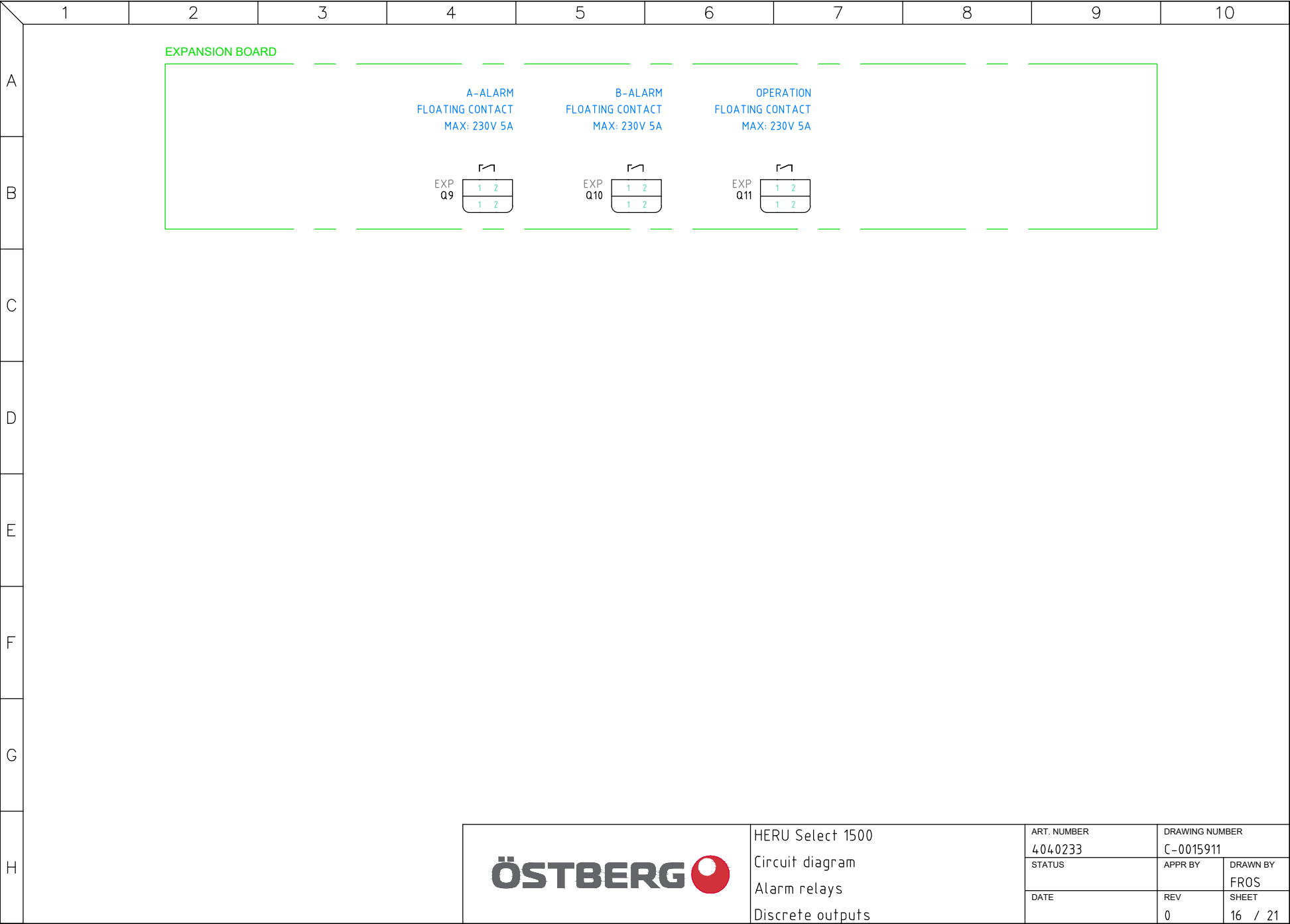




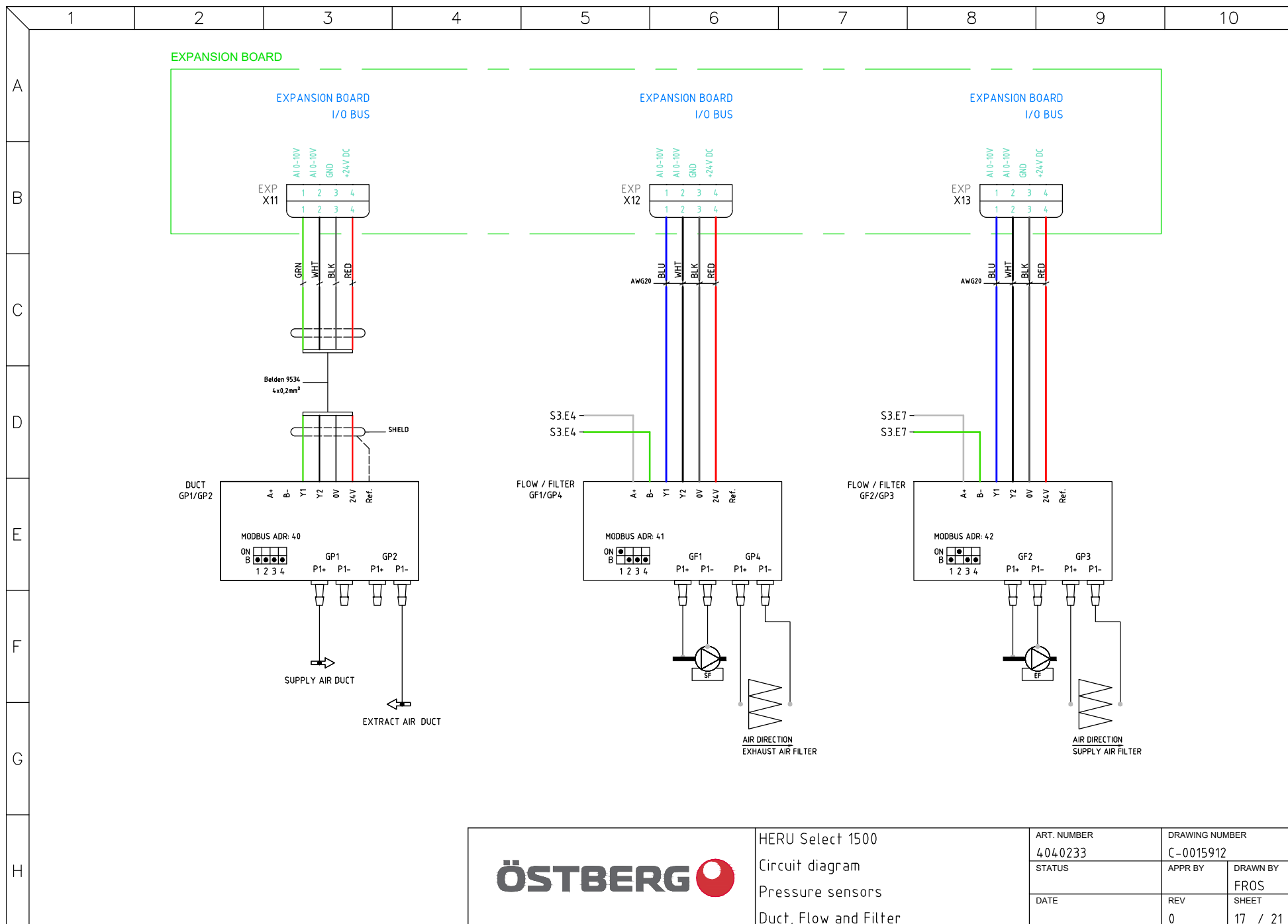


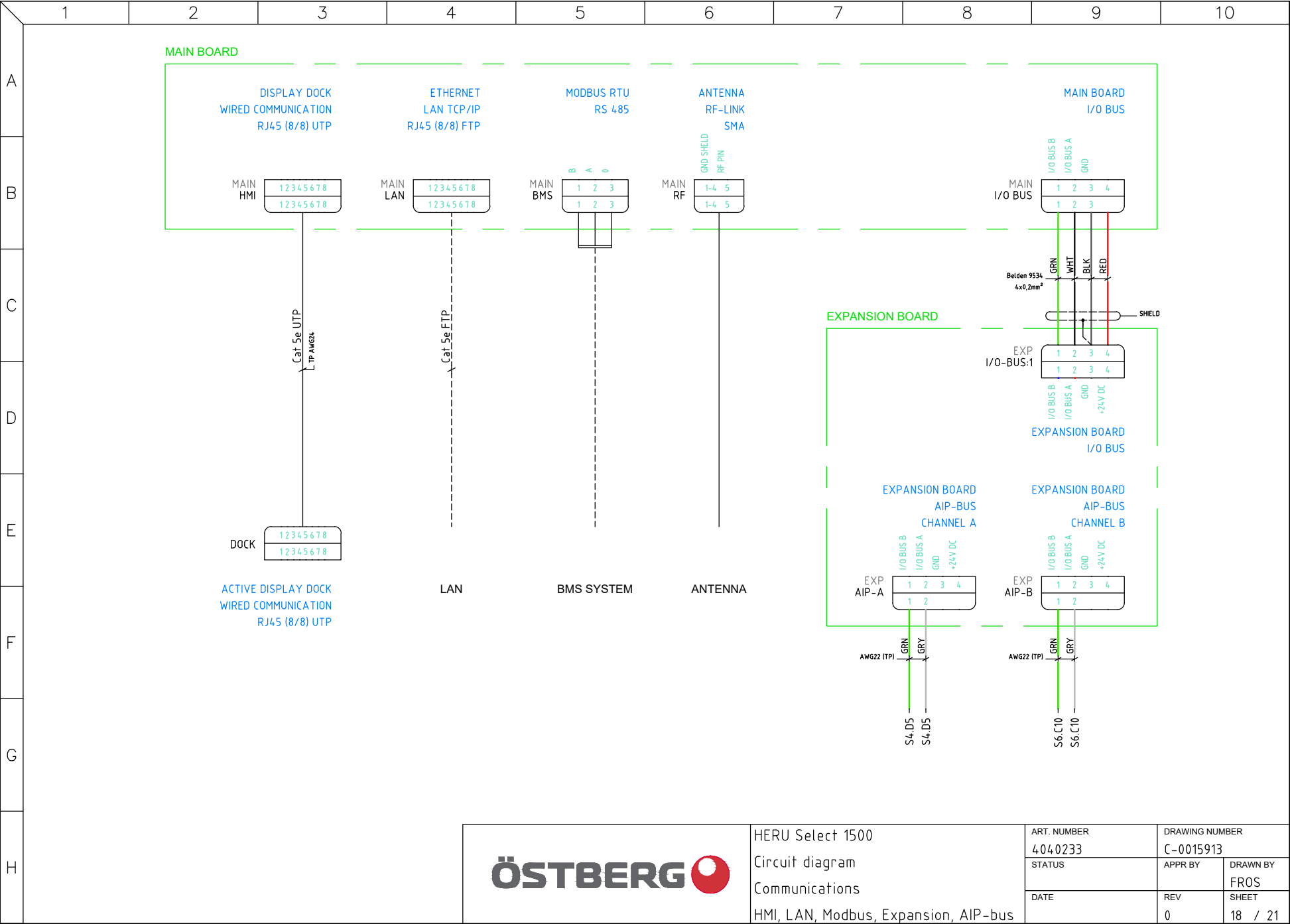
HERU Select 1500  
Circuit diagram  
External Inputs - Expansion  
RH/CO2/VOC, Temp.adj., Service stop

ART. NUMBER 4040233	DRAWING NUMBER C-0015910	
STATUS	APPR BY	DRAWN BY FROS
DATE	REV 0	SHEET 15 / 21










	1	2	3	4	5	6	7	8	9	10
A										
B	SH1	IECCMP1	PIN1	WLAY1	SH2	IECCMP2	PIN2			
	1	+EMI-BOX-MAIN	L1	RQ 2.5mm2-BRN	1	EMI Filter	L1			
	1	+EMI-BOX-MAIN	L2	RQ 2.5mm2-BLK	1	EMI Filter	L2			
C	1	+EMI-BOX-MAIN	L3	RQ 2.5mm2-GRY	1	EMI Filter	L3			
	1	+EMI-BOX-MAIN	N	RQ 2.5mm2-BLU	1	EMI Filter	N			
	1	+EMI-BOX-MAIN	PE	RQ 2.5mm2-GRNYEL	1	EMI Filter	PE			
D	1	EMI Filter	L1'	RQ 2.5mm2-BRN	1	+EMI-BOX-LOAD	L1			
	1	EMI Filter	L2'	RQ 2.5mm2-BLK	1	+EMI-BOX-LOAD	L2			
	1	EMI Filter	L3'	RQ 2.5mm2-GRY	1	+EMI-BOX-LOAD	L3			
E	1	EMI Filter	N'	RQ 2.5mm2-BLU	1	+EMI-BOX-LOAD	N			
	1	+EMI-BOX-LOAD	L1	H05VV-F 2.5mm2-BRN	1	-MAIN	L1			
	1	+EMI-BOX-LOAD	L2	H05VV-F 2.5mm2-BLK	1	-MAIN	L2			
F	1	+EMI-BOX-LOAD	L3	H05VV-F 2.5mm2-GRY	1	-MAIN	L3			
	1	+EMI-BOX-LOAD	N	H05VV-F 2.5mm2-BLU	1	-MAIN	N			
	1	+EMI-BOX-LOAD	PE	H05VV-F 2.5mm2-GRNYEL	1	-MAIN	PE			
G	1	-MAIN	L1	RQ 2.5mm2-BRN	1	F3 Fuse	2			
	1	F3 Fuse	1	RQ 1.5mm2-BRN	1	-INT	L1			
	1	-MAIN	N	RQ 1.5mm2-BLU	1	-INT	N			
H	1	-INT	L1	UL 1007-AWG 16-BRN	1	+PS-PS-CN1	3			
	1	-INT	N	UL 1007-AWG 16-BLU	1	+PS-PS-CN1	1			
	1	-INT	PE	UL 1007-AWG 20-GRNYEL	1	+PS-PE	1			
I	1	-INT	PE	UL 1007-AWG 16-GRNYEL	1	+MAIN-PE	1			
	1	+MAIN-Exp.	2	UL 1007-AWG 16-BRN	1	+EXP-EXP-IN	1			
	1	+MAIN-Exp.	3	UL 1007-AWG 16-BLU	1	+EXP-EXP-IN	2			
J	1	-DC 24V	+	UL 1007-AWG 20-RED	1	+PS-PS-CN2	2			
	1	-DC 24V	-	UL 1007-AWG 20-BLK	1	+PS-PS-CN2	1			
	2	-MAIN	L1	RQ 2.5mm2-BRN	2	F1 Fuse	2			
K	2	-MAIN	L2	RQ 2.5mm2-BLK	2	F1 Fuse	4			
	2	-MAIN	L3	RQ 2.5mm2-GRY	2	F1 Fuse	6			
	2	F1 Fuse	2	RQ 2.5mm2-BRN	2	F2 Fuse	2			
L	2	F1 Fuse	4	RQ 2.5mm2-BLK	2	F2 Fuse	4			
	2	F1 Fuse	6	RQ 2.5mm2-GRY	2	F2 Fuse	6			
	2	F1 Fuse	1	UL 1015-AWG 16-BRN	2	-CN1	10			
M	2	F1 Fuse	3	UL 1015-AWG 16-BLK	2	-CN1	2			
	2	F1 Fuse	5	UL 1015-AWG 16-GRY	2	-CN1	11			
	2	F2 Fuse	1	UL 1015-AWG 16-BRN	2	-CN2	10			
N	2	F2 Fuse	3	UL 1015-AWG 16-BLK	2	-CN2	2			
	2	F2 Fuse	5	UL 1015-AWG 16-GRY	2	-CN2	11			
	2	+MAIN-X1	1	UL 1007-AWG 20-YEL	2	-CN1	13			
O	2	+MAIN-X1	2	UL 1007-AWG 20-WHT	2	-CN1	4			
	2	+MAIN-X1	3	UL 1007-AWG 20-BLK	2	-CN1	5			
	2	-CN1	1	UL 1015-AWG 16-GRNYEL	3	-M1-X1	1			
P	2	-CN1	2	UL 1015-AWG 16-BLK	3	-M1-X1	2			
	2	-CN1	4	UL 1007-AWG 20-WHT	3	-M1-X1	4			
	2	-CN1	5	UL 1007-AWG 20-BLK	3	-M1-X1	5			
Q	2	-CN1	5	UL 1007-AWG 20-GRY	2	-CN1	12			
	2	-CN1	8	UL 1007-AWG 22-GRY	3	-M1-X1	6			
	2	-CN1	10	UL 1015-AWG 16-BRN	3	-M1-X1	8			
R	2	-CN1	11	UL 1015-AWG 16-GRY	3	-M1-X1	9			
	2	-CN1	12	UL 1007-AWG 20-GRY	3	-M1-X1	10			
	2	-CN1	13	UL 1007-AWG 20-YEL	3	-M1-X1	11			
S	2	-CN1	16	UL 1007-AWG 22-GRN	3	-M1-X1	12			
T	SH1	IECCMP1	PIN1	WLAY1	SH2	IECCMP2	PIN2			
	2	+MAIN-X2	1	UL 1007-AWG 20-YEL	2	-CN2	13			
	2	+MAIN-X2	2	UL 1007-AWG 20-WHT	2	-CN2	4			
U	2	+MAIN-X2	3	UL 1007-AWG 20-BLK	2	-CN2	5			
	2	-CN2	1	UL 1015-AWG 16-GRNYEL	3	-M2-X1	1			
	2	-CN2	2	UL 1015-AWG 16-BLK	3	-M2-X1	2			
V	2	-CN2	4	UL 1007-AWG 20-WHT	3	-M2-X1	4			
	2	-CN2	5	UL 1007-AWG 20-BLK	3	-M2-X1	5			
	2	-CN2	5	UL 1007-AWG 20-GRY	2	-CN2	12			
W	2	-CN2	8	UL 1007-AWG 22-GRY	3	-M2-X1	6			
	2	-CN2	10	UL 1015-AWG 16-BRN	3	-M2-X1	8			
	2	-CN2	11	UL 1015-AWG 16-GRY	3	-M2-X1	9			
X	2	-CN2	12	UL 1007-AWG 20-GRY	3	-M2-X1	10			
	2	-CN2	13	UL 1007-AWG 20-YEL	3	-M2-X1	11			
	2	-CN2	16	UL 1007-AWG 22-GRN	3	-M2-X1	12			
Y	4	-Motor Controller	L	UL 1007-AWG 16-BRN	4	-M3-X1	8			
	4	-Motor Controller	N	UL 1007-AWG 16-BLU	4	-M3-X1	7			
	4	-Motor Controller	PE	UL 1007-AWG 16-GRNYEL	4	-M3-X1	1			
Z	4	-Motor Controller	2	UL 1007-AWG 20-YEL	4	-M3-X1	4			
	4	-Motor Controller	3	UL 1007-AWG 20-BLK	4	-M3-X1	9			
	4	-Motor Controller	3	UL 1007-AWG 20-BLK	4	-Motor Controller	15			
AA	4	-Motor Controller	13	UL 1007-AWG 20-WHT	4	-M3-X1	11			
	4	-Motor Controller	A	UL 1007-AWG 22-GRY	4	-M3-X1	6			
	4	-Motor Controller	B	UL 1007-AWG 22-GRN	4	-M3-X1	12			
AB	4	-INT	N	UL 1007-AWG 16-BRN	4	-M3-X1	8			
	4	-INT	PE	UL 1007-AWG 16-GRNYEL	4	-M3-X1	1			
	4	-INT	L1	UL 1007-AWG 16-BLU	4	-M3-X1	7			
AC	4	-M3-X1	6	UL 1007-AWG 22-GRY	4	-MB-X1	1			
	4	-MB-X1	1	UL 1007-AWG 22-GRY	6	-HT-R	6			
	4	-M3-X1	12	UL 1007-AWG 22-GRN	4	-MB-X1	2			
AD	4	-MB-X1	2	UL 1007-AWG 22-GRN	6	-HT-R	12			
	4	+MAIN-DI-2W	1	UL 1007-AWG 20-BRN	4	-GR1	1			
	4	+MAIN-DI-2W	2	UL 1007-AWG 20-WHT	4	-GR1	2			
AE	4	+MAIN-X3	2	UL 1007-AWG 20-YEL	4	-M3-X1	4			
	4	+MAIN-X3	3	UL 1007-AWG 20-GRN	4	-M3-X1	10			
	4	+MAIN-X3	4	UL 1007-AWG 20-BLK	4	-M3-X1	9			
AF	4	+MAIN-X3	5	UL 1007-AWG 20-BLU	4	-M3-X1	5			
	4	+MAIN-X3	6	UL 1007-AWG 20-WHT	4	-M3-X1	11			
	4	-DC 24V	+	UL 1007-AWG 20-RED	4	-M3-X1	3			
AG	4	-DC 24V	-	UL 1007-AWG 20-GRY	4	-M3-X1	2			
	5	+MAIN-T1	1	UL 1007-AWG 20-RED	5	-GT1	1			
	5	+MAIN-T1	2	UL 1007-AWG 20-WHT	5	-GT1	2			
AH	5	+MAIN-T2	1	UL 1007-AWG 20-ORG	5	-GT2	1			
	5	+MAIN-T2	2	UL 1007-AWG 20-WHT	5	-GT2	2			
	5	+MAIN-T3	1	UL 1007-AWG 20-YEL	5	-GT3	1			
AI	5	+MAIN-T3	2	UL 1007-AWG 20-WHT	5	-GT3	2			
	5	+MAIN-T4	1	UL 1007-AWG 20-GRN	5	-GT4	1			
	5	+MAIN-T4	2	UL 1007-AWG 20-WHT	5	-GT4	2			
AJ	5	+MAIN-T6	1	UL 1007-AWG 20-BRN	5	-GT7	1			
	5	+MAIN-T6	2	UL 1007-AWG 20-WHT	5	-GT7	2			
AK										
AL										
AM										
AN										
AO										
AP										
AQ										
AR										
AS										
AT										
AU										
AV										
AW										
AX										
AY										
AZ										
BA										
BB										
BC										
BD										
BE										
BF										
BG										
BH										
BI										
BJ										
BK										
BL										
BM										
BN										
BO										
BP										
BQ										
BR										
BS										
BT										
BU										
BV										
BW										
BX										
BY										
BZ										
CA										
CB										
CC										
CD										
CE										
CF										
CG										
CH										
CI										
CJ										
CK										
CL										
CM										
CN										
CO										
CP										
CQ										
CR										
CS										
CT										
CU										
CV										
CW										
CX										
CY										
CZ										
DA										
DB										
DC										
DD										
DE										
DF										
DG										
DH										
DI										
DJ										
DK										

	1	2	3	4	5	6	7	8	9	10				
A														
B	SH1	IECCMP1	PIN1	WLAY1	SH2	IECCMP2	PIN2	SH1	IECCMP1	PIN1	WLAY1	SH2	IECCMP2	PIN2
	6	+HT-K1	2 T1	RQ 2.5mm2-BRN	6	Pulser	L1-IN	7	+HT-K1	2 T1	RQ 2.5mm2-BRN	7	Pulser	L1-IN
	6	+HT-K1	4 T2	RQ 2.5mm2-BLK	6	Pulser	L2-IN	7	+HT-K1	4 T2	RQ 2.5mm2-BLK	7	Pulser	L2-IN
	6	+HT-K1	6 T3	RQ 2.5mm2-GRY	6	Pulser	L3-IN	7	+HT-K1	6 T3	RQ 2.5mm2-GRY	7	Pulser	L3-IN
	6	Pulser	L1-OUT	RQ 2.5mm2-BRN	6	+HT-COIL R2:1	1	7	Pulser	L1-OUT	RQ 2.5mm2-BRN	7	+HT-COIL R2:1	1
	6	+HT-COIL R2:1	1	RQ 2.5mm2-BRN	6	+HT-COIL R3:1	1	7	+HT-COIL R2:1	1	RQ 2.5mm2-BRN	7	+HT-COIL R3:1	1
	6	Pulser	L2-OUT	RQ 2.5mm2-BLK	6	+HT-COIL R2:2	1	7	Pulser	L2-OUT	RQ 2.5mm2-BLK	7	+HT-COIL R2:2	1
	6	+HT-COIL R2:2	1	RQ 2.5mm2-BLK	6	+HT-COIL R3:2	1	7	+HT-COIL R2:2	1	RQ 2.5mm2-BLK	7	+HT-COIL R3:2	1
	6	Pulser	L3-OUT	RQ 2.5mm2-GRY	6	+HT-COIL R2:3	1	7	Pulser	L3-OUT	RQ 2.5mm2-GRY	7	+HT-COIL R2:3	1
	6	+HT-COIL R2:3	1	RQ 2.5mm2-GRY	6	+HT-COIL R3:3	1	7	+HT-COIL R2:3	1	RQ 2.5mm2-GRY	7	+HT-COIL R3:3	1
C	6	+HT-COIL R2:1	2	RQ 2.5mm2-BRN	6	+HT-COIL R2:2	2	7	+HT-COIL R2:1	2	RQ 2.5mm2-BRN	7	+HT-COIL R2:2	2
	6	+HT-COIL R2:2	2	RQ 2.5mm2-BRN	6	+HT-COIL R2:3	2	7	+HT-COIL R2:2	2	RQ 2.5mm2-BRN	7	+HT-COIL R2:3	2
	6	+HT-COIL R3:1	2	RQ 2.5mm2-BRN	6	+HT-COIL R3:2	2	7	+HT-COIL R3:1	2	RQ 2.5mm2-BRN	7	+HT-COIL R3:2	2
	6	+HT-COIL R3:2	2	RQ 2.5mm2-BRN	6	+HT-COIL R3:3	2	7	+HT-COIL R3:2	2	RQ 2.5mm2-BRN	7	+HT-COIL R3:3	2
	6	+HT-K2	2 T1	RQ 2.5mm2-BRN	6	+HT-COIL R1:1	1	7	+HT-K2	2 T1	RQ 2.5mm2-BRN	7	+HT-COIL R1:1	1
	6	+HT-COIL R1:1	1	RQ 2.5mm2-BRN	6	+HT-COIL R4:1	1	7	+HT-COIL R1:1	1	RQ 2.5mm2-BRN	7	+HT-COIL R4:1	1
	6	+HT-K2	4 T2	RQ 2.5mm2-BLK	6	+HT-COIL R1:2	1	7	+HT-K2	4 T2	RQ 2.5mm2-BLK	7	+HT-COIL R1:2	1
	6	+HT-COIL R1:2	1	RQ 2.5mm2-BLK	6	+HT-COIL R4:2	1	7	+HT-COIL R1:2	1	RQ 2.5mm2-BLK	7	+HT-COIL R4:2	1
	6	+HT-K2	6 T3	RQ 2.5mm2-GRY	6	+HT-COIL R1:3	1	7	+HT-K2	6 T3	RQ 2.5mm2-GRY	7	+HT-COIL R1:3	1
	6	+HT-COIL R1:3	1	RQ 2.5mm2-GRY	6	+HT-COIL R4:3	1	7	+HT-COIL R1:3	1	RQ 2.5mm2-GRY	7	+HT-COIL R4:3	1
D	6	+HT-COIL R1:1	2	RQ 2.5mm2-BRN	6	+HT-COIL R1:2	2	7	+HT-COIL R1:1	2	RQ 2.5mm2-BRN	7	+HT-COIL R1:2	2
	6	+HT-COIL R1:2	2	RQ 2.5mm2-BRN	6	+HT-COIL R1:3	2	7	+HT-COIL R1:2	2	RQ 2.5mm2-BRN	7	+HT-COIL R1:3	2
	6	+HT-COIL R4:1	2	RQ 2.5mm2-BRN	6	+HT-COIL R4:2	2	7	+HT-COIL R4:1	2	RQ 2.5mm2-BRN	7	+HT-COIL R4:2	2
	6	+HT-COIL R4:2	2	RQ 2.5mm2-BRN	6	+HT-COIL R4:3	2	7	+HT-COIL R4:2	2	RQ 2.5mm2-BRN	7	+HT-COIL R4:3	2
	6	-INT	L1	UL 1007-AWG 16-BRN	6	-HT-R	1	7	-INT	L1	UL 1007-AWG 16-BRN	7	-HT-R	1
	6	-HT-X	1	UL 1007-AWG 16-BRN	6	+HT-K1	A1	7	-HT-X	1	UL 1007-AWG 16-BRN	7	+HT-K1	A1
	6	+HT-K1	A1	RQ 1.5mm2-BRN	6	Pulser (TT-S1)	1	7	+HT-K1	A1	RQ 1.5mm2-BRN	7	Pulser (TT-S1)	1
	6	Pulser (TT-S1)	2	RQ 1.5mm2-BRN	6	+HT-K2	A1	7	Pulser (TT-S1)	2	RQ 1.5mm2-BRN	7	+HT-K2	A1
	6	+HT-K1	A2	RQ 1.5mm2-BLK	6	+HT-K2	A2	7	+HT-K1	A2	RQ 1.5mm2-BLK	7	+HT-K2	A2
	6	+HT-K2	A2	RQ 1.5mm2-BLK	6	+HT-TP-M	2	7	+HT-K2	A2	RQ 1.5mm2-BLK	7	+HT-TP-M	2
E	6	+HT-TP-M	1	RQ 1.5mm2-BLK	6	+HT-TP-A	1	7	+HT-TP-M	1	RQ 1.5mm2-BLK	7	+HT-TP-A	1
	6	+HT-TP-A	2	RQ 1.5mm2-BLU	6	+HT-X3	1	7	+HT-TP-A	2	RQ 1.5mm2-BLU	7	+HT-X3	1
	6	+HT-X3	1	UL 1007-AWG 16-BLU	6	-HT-X	7	7	+HT-X3	1	UL 1007-AWG 16-BLU	7	-HT-X	7
	6	-HT-R	7	UL 1007-AWG 16-BLU	6	-INT	N	7	-HT-R	7	UL 1007-AWG 16-BLU	7	-INT	N
	6	-HT-X	3	UL 1007-AWG 20-ORG	6	Pulser	2	7	-HT-X	3	UL 1007-AWG 20-ORG	7	Pulser	2
	6	-HT-X	8	UL 1007-AWG 20-BLK	6	Pulser	1	7	-HT-X	8	UL 1007-AWG 20-BLK	7	Pulser	1
	6	Pulser	1	UL 1007-AWG 20-BLK	6	+HT-K1	14 NO	7	Pulser	1	UL 1007-AWG 20-BLK	7	+HT-K1	14 NO
	6	+HT-K1	13 NO	UL 1007-AWG 20-WHT	6	-HT-X	10	7	+HT-K1	13 NO	UL 1007-AWG 20-WHT	7	-HT-X	10
	6	+MAIN-RC-X5 (R)	1	UL 1007-AWG 20-RED	6	-HT-R	2	7	+MAIN-RC-X5 (R)	1	UL 1007-AWG 20-RED	7	-HT-L	2
	6	+MAIN-RC-X5 (R)	2	UL 1007-AWG 20-ORG	6	-HT-R	3	7	+MAIN-RC-X5 (R)	2	UL 1007-AWG 20-ORG	7	-HT-L	3
F	6	+MAIN-RC-X5 (R)	3	UL 1007-AWG 20-YEL	6	-HT-R	4	7	+MAIN-RC-X5 (R)	3	UL 1007-AWG 20-YEL	7	-HT-L	4
	6	+MAIN-RC-X5 (R)	4	UL 1007-AWG 20-BLK	6	-HT-R	8	7	+MAIN-RC-X5 (R)	4	UL 1007-AWG 20-BLK	7	-HT-L	8
	6	+MAIN-RC-X5 (R)	6	UL 1007-AWG 20-WHT	6	-HT-R	10	7	+MAIN-RC-X5 (R)	6	UL 1007-AWG 20-WHT	7	-HT-L	10
	6	-HT-R	6	UL 1007-AWG 22-GRY	2	-CN1	8	7	-HT-L	6	UL 1007-AWG 22-GRY	2	-CN2	8
	6	-HT-R	12	UL 1007-AWG 22-GRN	2	-CN1	16	7	-HT-L	12	UL 1007-AWG 22-GRN	2	-CN2	16
	6	+MAIN-D7	1	RQ 0.75mm2-BRN	6	-GP5	1	7	+MAIN-D7	1	RQ 0.75mm2-BRN	7	-GP5	1
G	6	+MAIN-D7	2	RQ 0.75mm2-BLU	6	-GP5	2	7	+MAIN-D7	2	RQ 0.75mm2-BLU	7	-GP5	2
H														
						HERU Select 1500		ART. NUMBER		DRAWING NUMBER				
						Circuit diagram		4040233		C-0015915				
						Wire Run List		STATUS		APPR BY	DRAWN BY			
								DATE		REV	FROS SHEET			
										0	20 / 21			



	1	2	3	4	5	6	7	8	9	10	
A											
B	SH1	IECCMP1	PIN1	WLAY1	SH2	IECCMP2	PIN2				
	8	-HT-X	5	UL 1007-AWG 20-BLU	8	-GT5	1				
	8	-HT-X	11	UL 1007-AWG 20-WHT	8	-GT5	2				
	8	+MAIN-RC-T5 (R)	1	UL 1007-AWG 20-BLU	8	-HT-R	5				
	8	+MAIN-RC-T5 (R)	2	UL 1007-AWG 20-WHT	8	-HT-R	11				
	9	-HT-X	5	UL 1007-AWG 20-BLU	9	-GT5	1				
	9	-HT-X	11	UL 1007-AWG 20-WHT	9	-GT5	2				
	9	+MAIN-RC-T5 (L)	1	UL 1007-AWG 20-BLU	9	-HT-L	5				
	9	+MAIN-RC-T5 (L)	2	UL 1007-AWG 20-WHT	9	-HT-L	11				
	10	-HT-X	5	UL 1007-AWG 20-BLU	10	-GT5	1				
C	10	-HT-X	11	UL 1007-AWG 20-WHT	10	-GT5	2				
	10	+MAIN-RC-T5 (R)	1	UL 1007-AWG 20-BLU	10	-HT-R	5				
	10	+MAIN-RC-T5 (R)	2	UL 1007-AWG 20-WHT	10	-HT-R	11				
	11	-HT-X	5	UL 1007-AWG 20-BLU	11	-GT5	1				
	11	-HT-X	11	UL 1007-AWG 20-WHT	11	-GT5	2				
	11	+MAIN-RC-T5 (L)	1	UL 1007-AWG 20-BLU	11	-HT-L	5				
	11	+MAIN-RC-T5 (L)	2	UL 1007-AWG 20-WHT	11	-HT-L	11				
	17	+EXP-X11	1	UL 1007-AWG 24-GRN	17	-DUCT GP1/GP2	Y1				
	17	+EXP-X11	2	UL 1007-AWG 24-WHT	17	-DUCT GP1/GP2	Y2				
	17	+EXP-X11	3	UL 1007-AWG 24-BLK	17	-DUCT GP1/GP2	0V				
D	17	+EXP-X11	4	UL 1007-AWG 24-RED	17	-DUCT GP1/GP2	24V				
	17	+EXP-X12	1	UL 1007-AWG 20-BLU	17	-FLOW/FILTER GF1/GP4	Y1				
	17	+EXP-X12	2	UL 1007-AWG 20-WHT	17	-FLOW/FILTER GF1/GP4	Y2				
	17	+EXP-X12	3	UL 1007-AWG 20-BLK	17	-FLOW/FILTER GF1/GP4	0V				
	17	+EXP-X12	4	UL 1007-AWG 20-RED	17	-FLOW/FILTER GF1/GP4	24V				
	17	+EXP-X13	1	UL 1007-AWG 20-BLU	17	-FLOW/FILTER GF2/GP3	Y1				
	17	+EXP-X13	2	UL 1007-AWG 20-WHT	17	-FLOW/FILTER GF2/GP3	Y2				
	17	+EXP-X13	3	UL 1007-AWG 20-BLK	17	-FLOW/FILTER GF2/GP3	0V				
	17	+EXP-X13	4	UL 1007-AWG 20-RED	17	-FLOW/FILTER GF2/GP3	24V				
	18	+EXP-AIP-A	1	UL 1007-AWG 22-GRN	4	-M3-X1	12				
E	18	+EXP-AIP-A	2	UL 1007-AWG 22-GRY	4	-M3-X1	6				
	18	+EXP-AIP-B	1	UL 1007-AWG 22-GRN	7	-HT-L	12				
	18	+EXP-AIP-B	2	UL 1007-AWG 22-GRY	7	-HT-L	6				
	18	+MAIN-I/O BUS	1	UL 1007-AWG 24-GRN	18	+EXP-I/O-BUS:1	1				
	18	+MAIN-I/O BUS	2	UL 1007-AWG 24-WHT	18	+EXP-I/O-BUS:1	2				
	18	+MAIN-I/O BUS	3	UL 1007-AWG 24-BLK	18	+EXP-I/O-BUS:1	3				
	18	+MAIN-I/O BUS	4	UL 1007-AWG 24-RED	18	+EXP-I/O-BUS:1	4				
	F										
	G										
	H										

	HERU Select 1500	ART. NUMBER	DRAWING NUMBER	
	Circuit diagram Wire Run List	4040233	C-0015916	
		STATUS	APPR BY	DRAWN BY
		DATE	REV	SHEET
		0	21 / 21	



HERU Select 1500  
Circuit diagram  
Wire Run List

ART. NUMBER	DRAWING NUMBER	
4040233	C-0015916	
STATUS	APPR BY	DRAWN BY
		FROS
DATE	REV	SHEET
	0	21 / 21