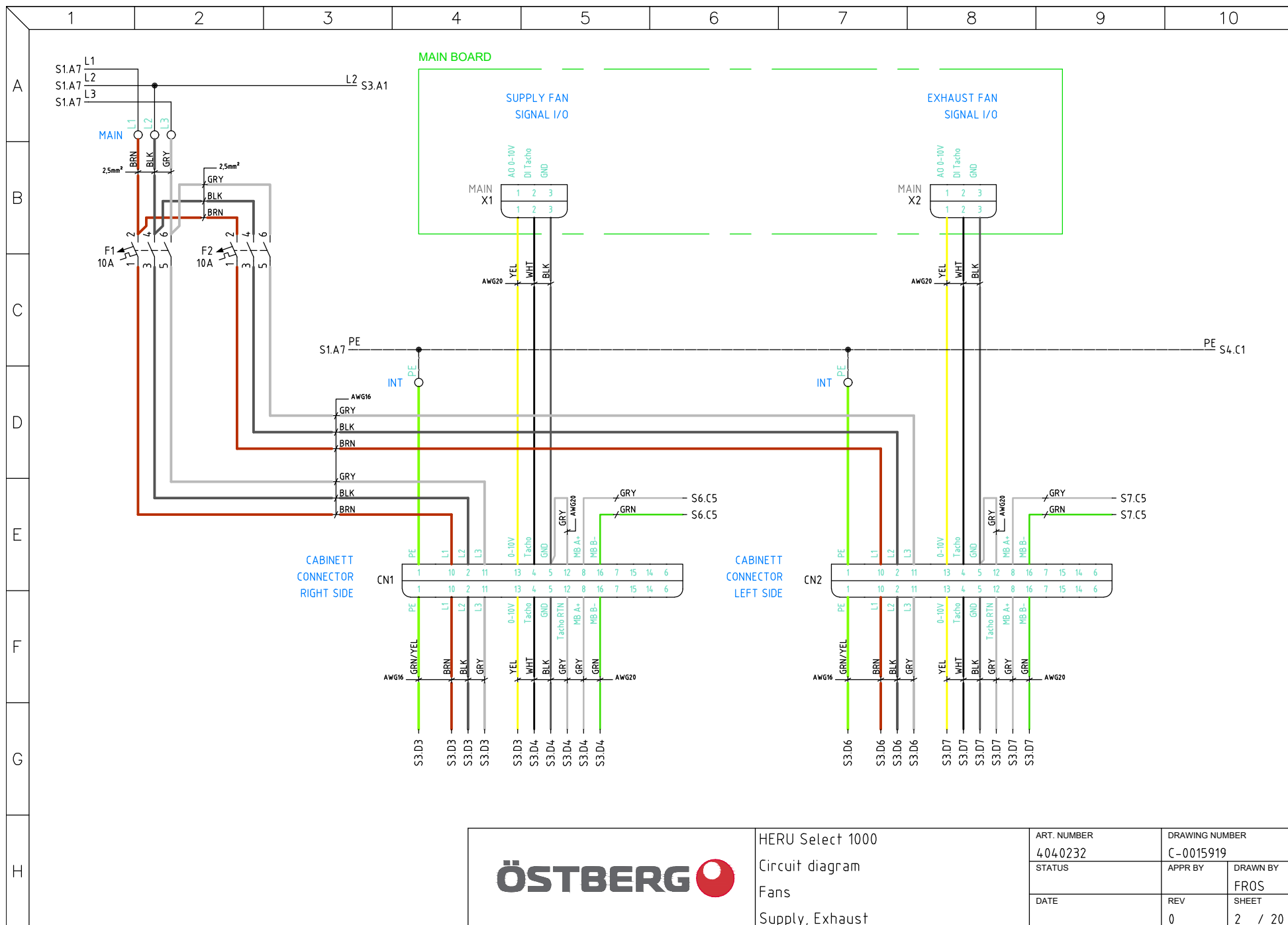
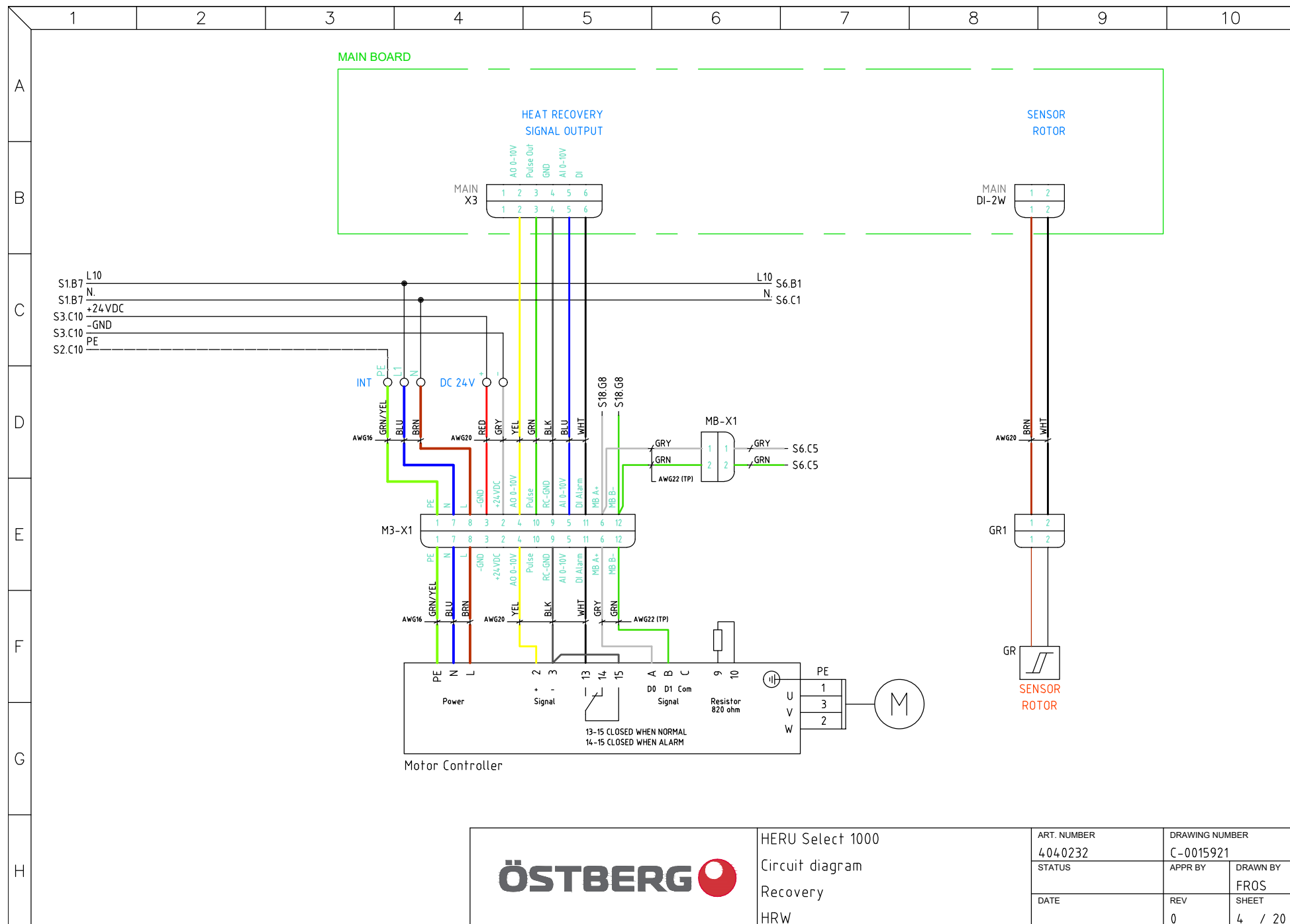


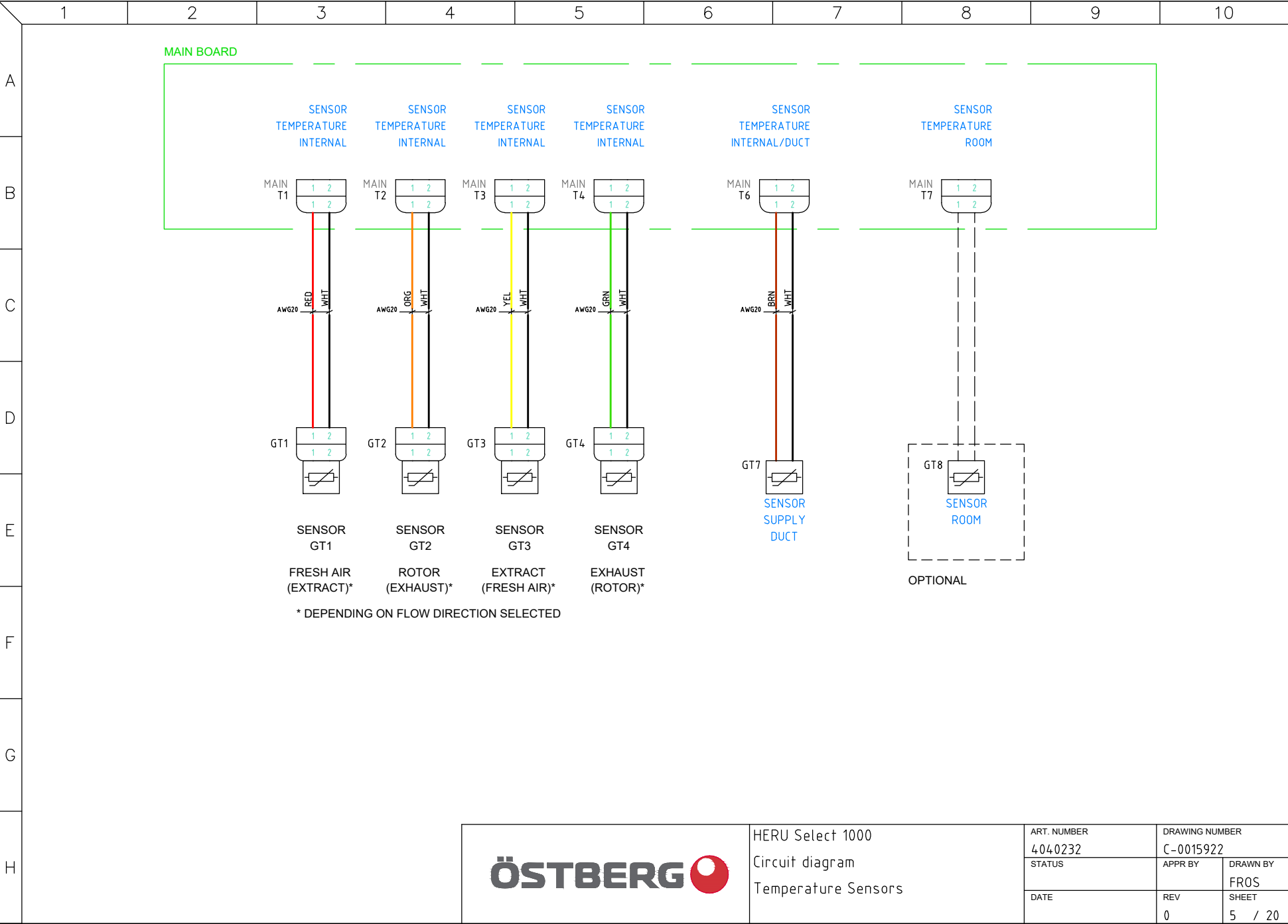
ÖSTBERG

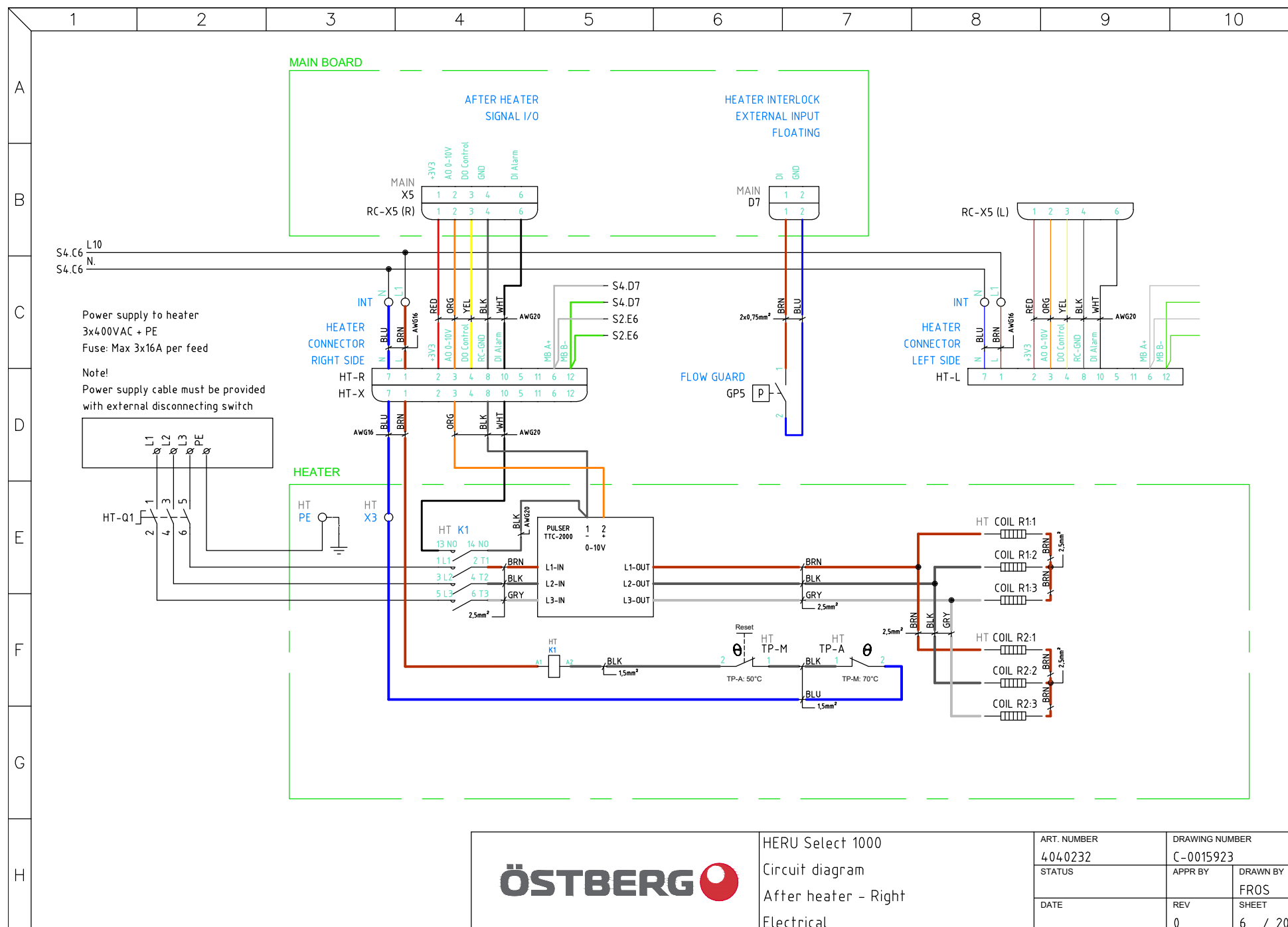
HERU Select 1000
Circuit diagram
Power

ART. NUMBER 4040232	DRAWING NUMBER C-0015918	
STATUS	APPR BY	DRAWN BY FROS
DATE	REV 0	SHEET 1 / 20





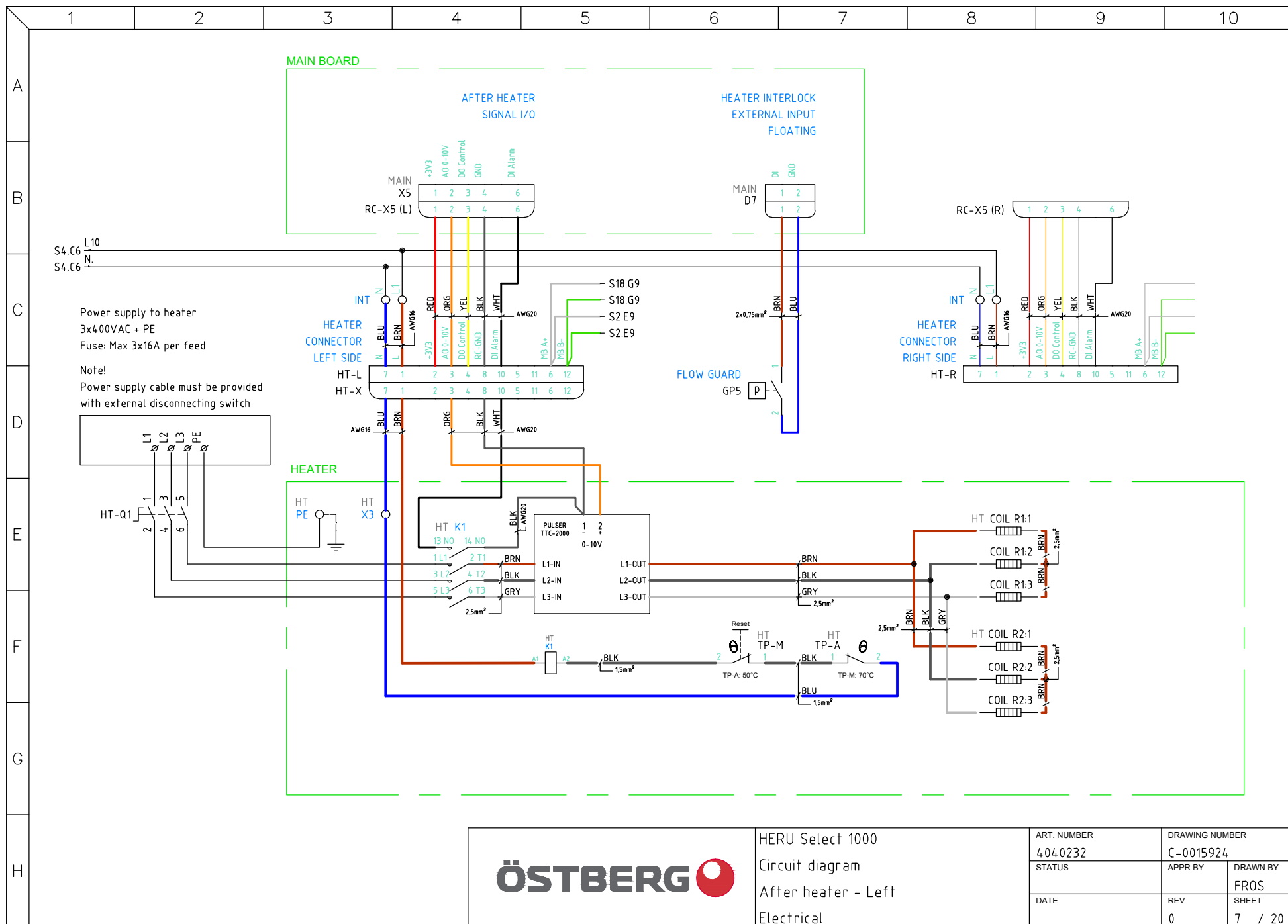




ÖSTBERG

HERU Select 1000
Circuit diagram
After heater - Right
Electrical

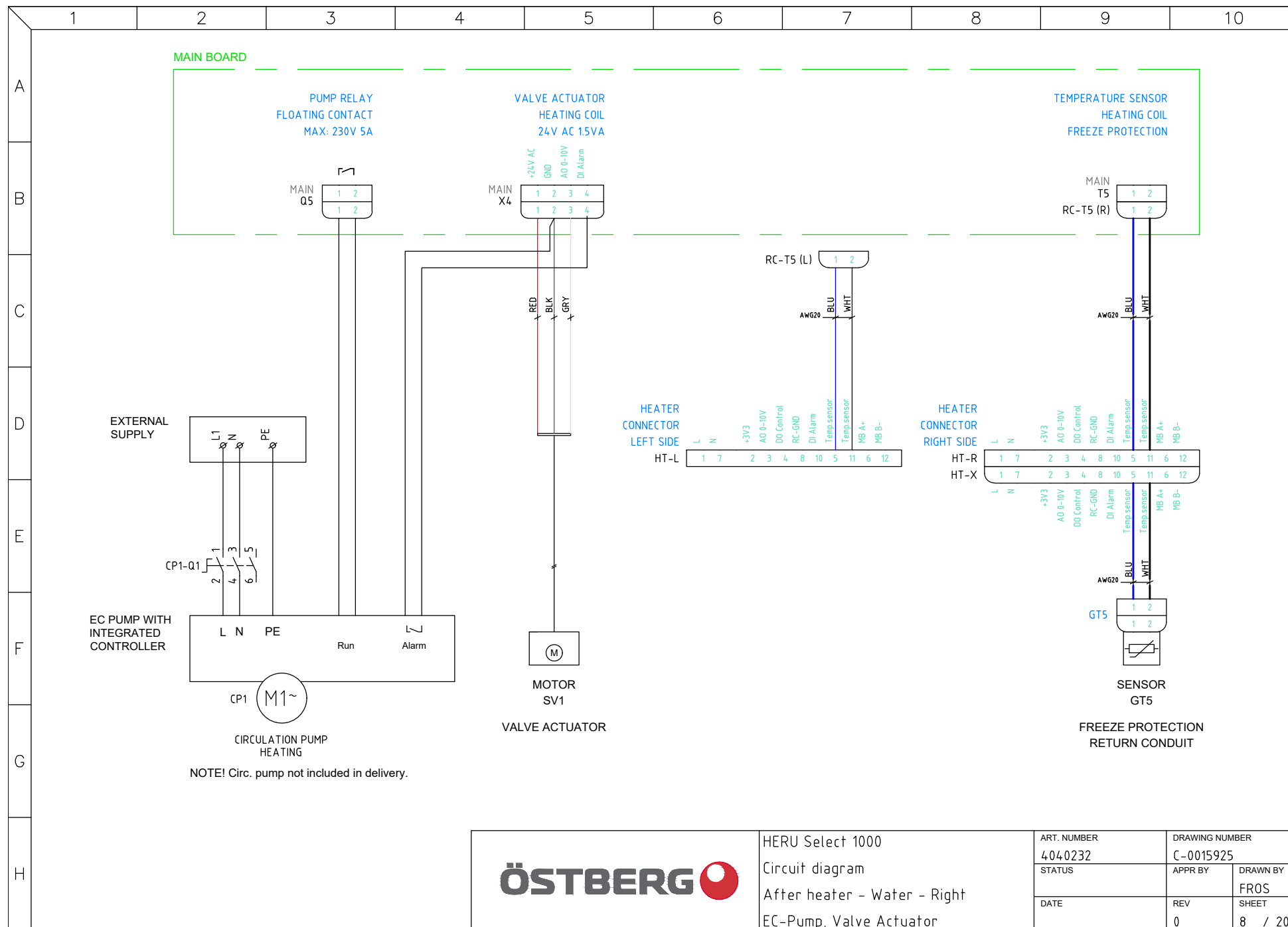
ART. NUMBER 4040232	DRAWING NUMBER C-0015923	
STATUS	APPR BY	DRAWN BY FROS
DATE	REV 0	SHEET 6 / 20

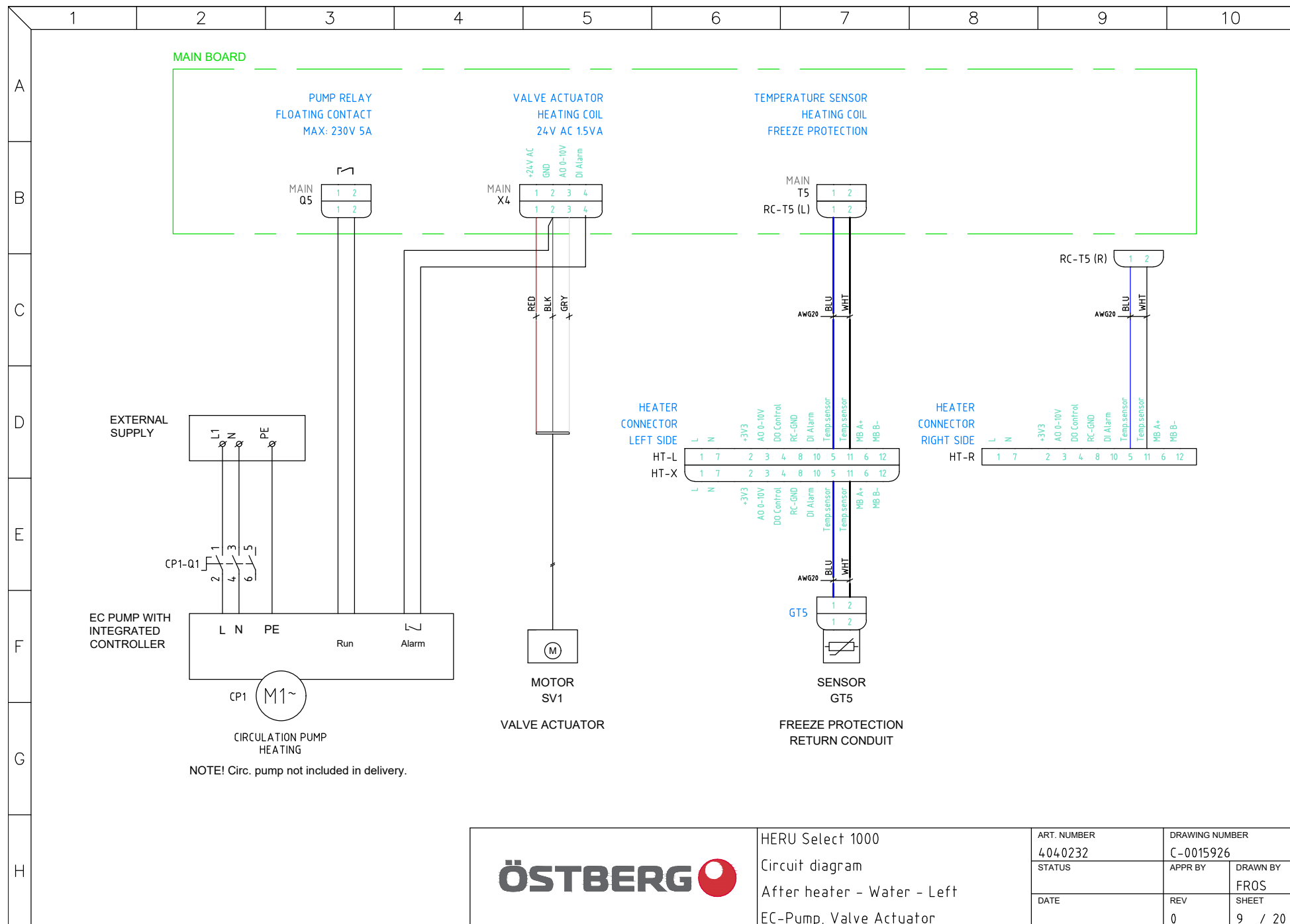


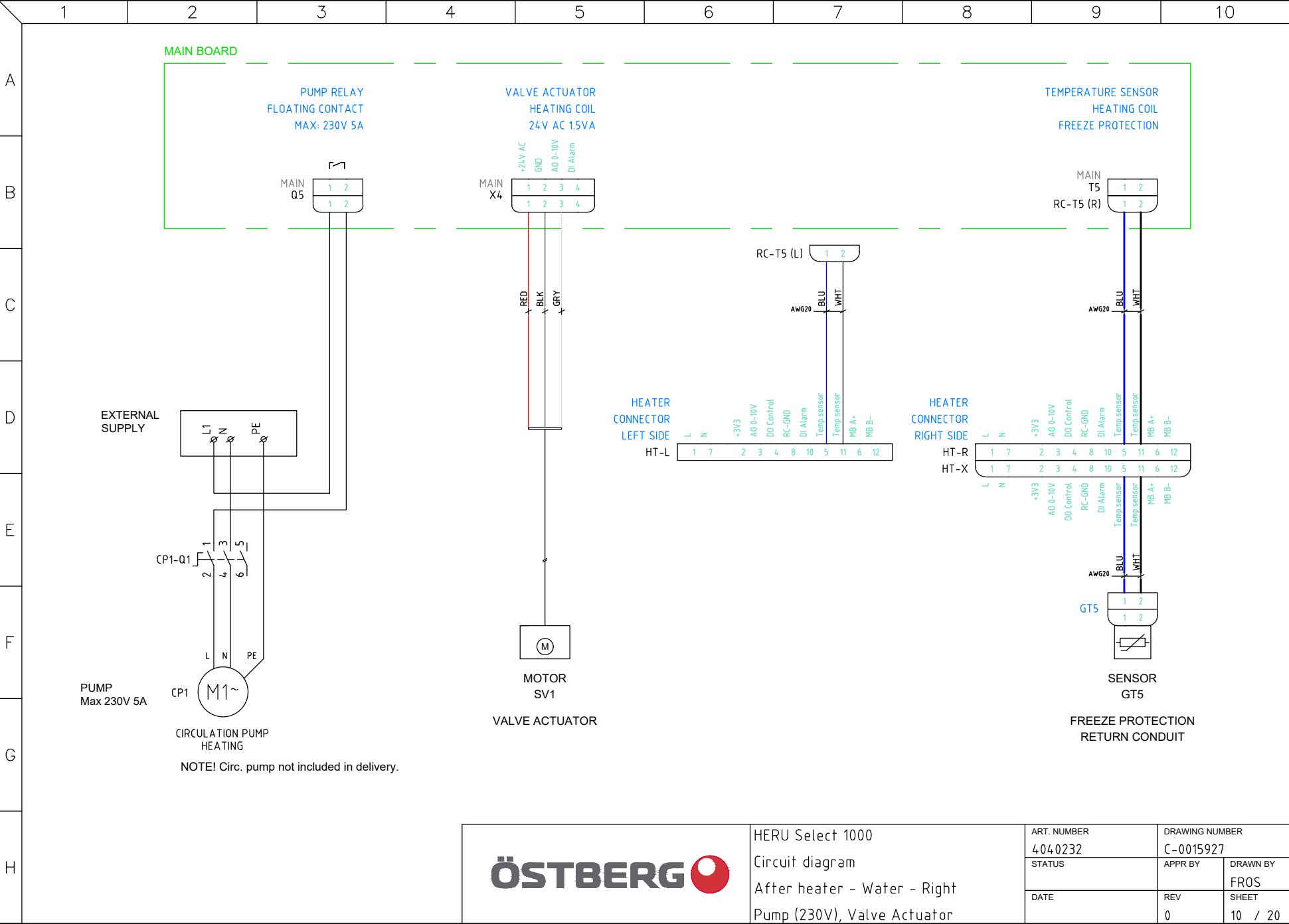
ÖSTBERG

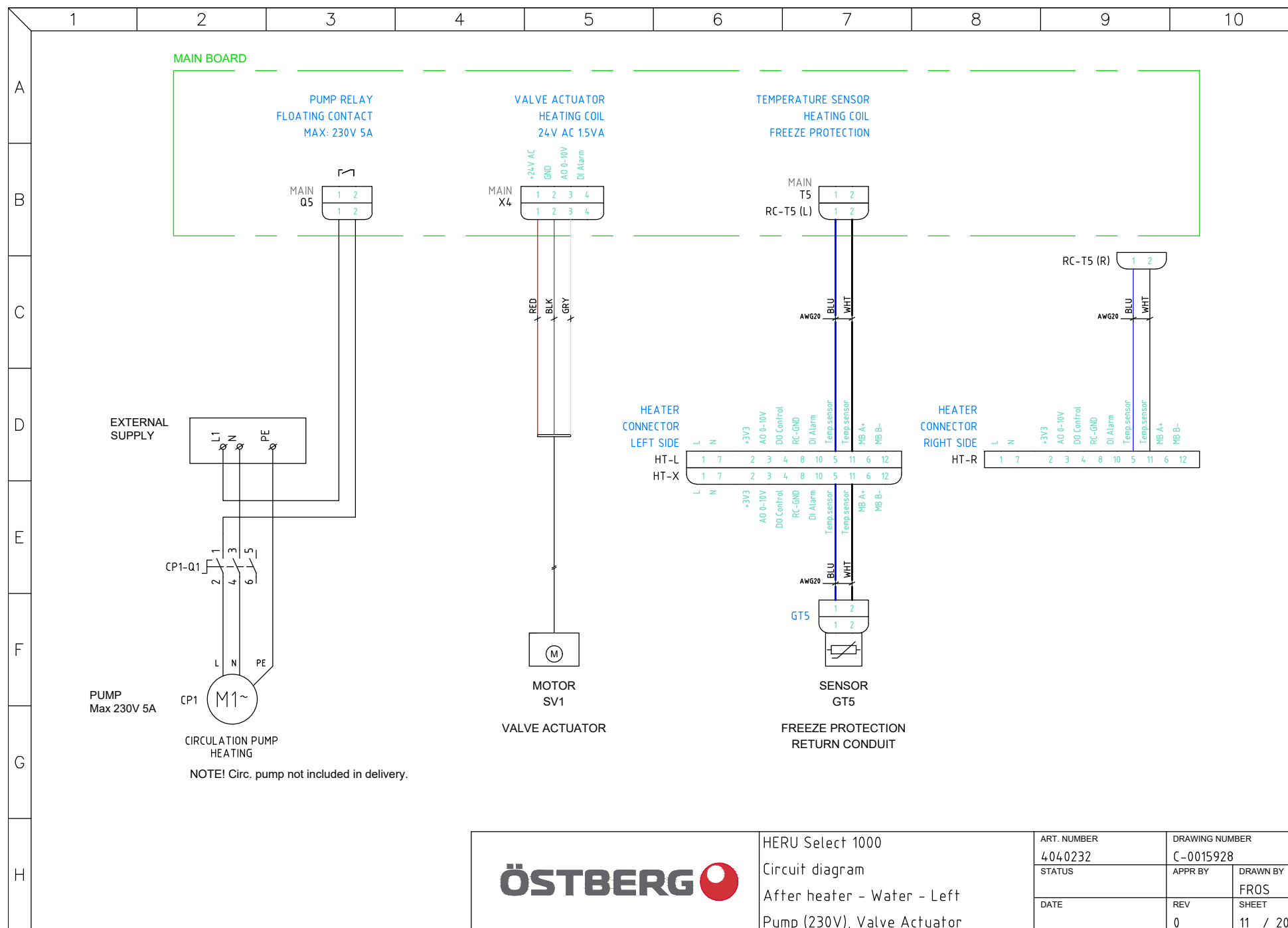
HERU Select 1000
Circuit diagram
After heater - Left
Electrical

ART. NUMBER	DRAWING NUMBER	
404.0232	C-0015924	
STATUS	APPR BY	DRAWN BY
		FROS
DATE	REV	SHEET
	0	7 / 20





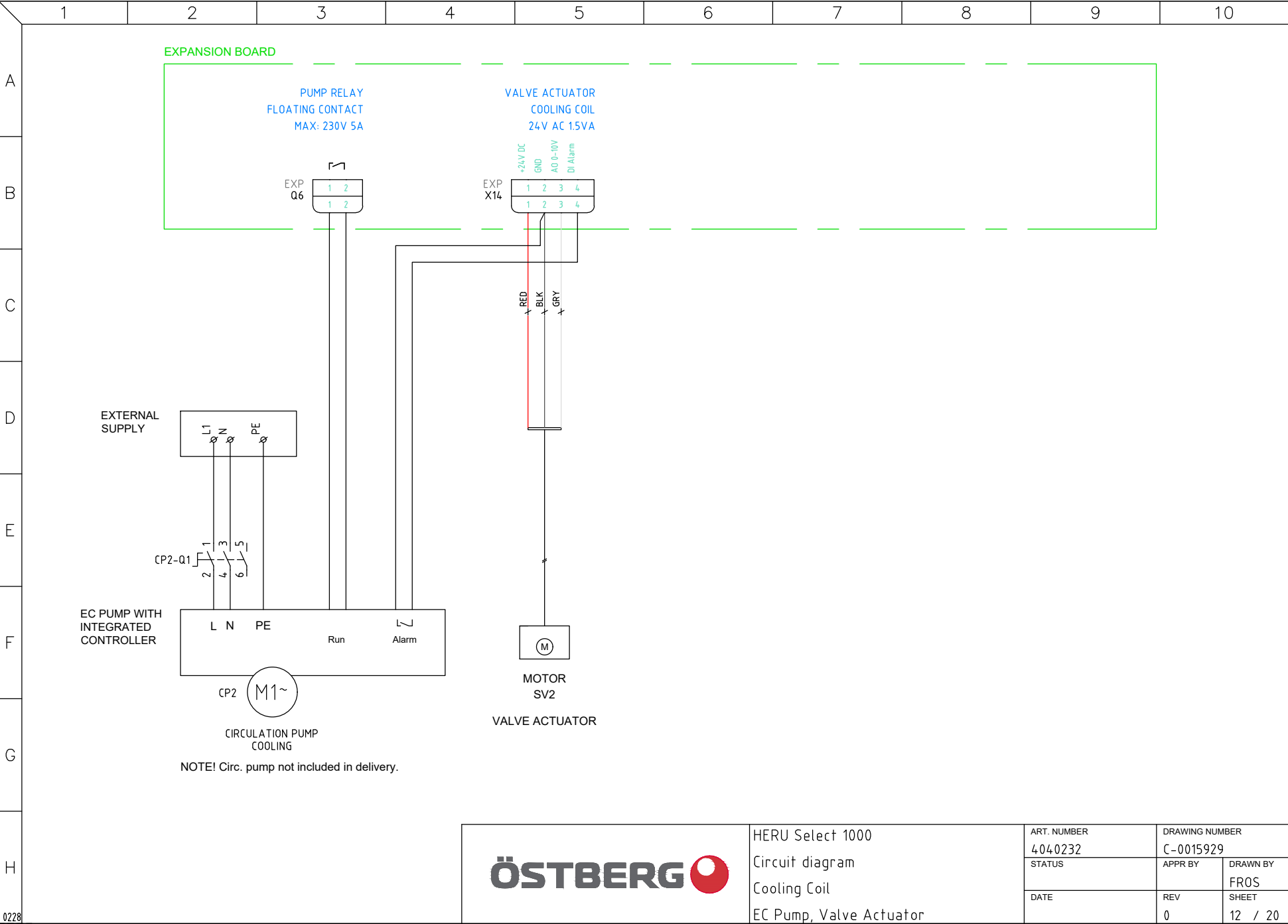


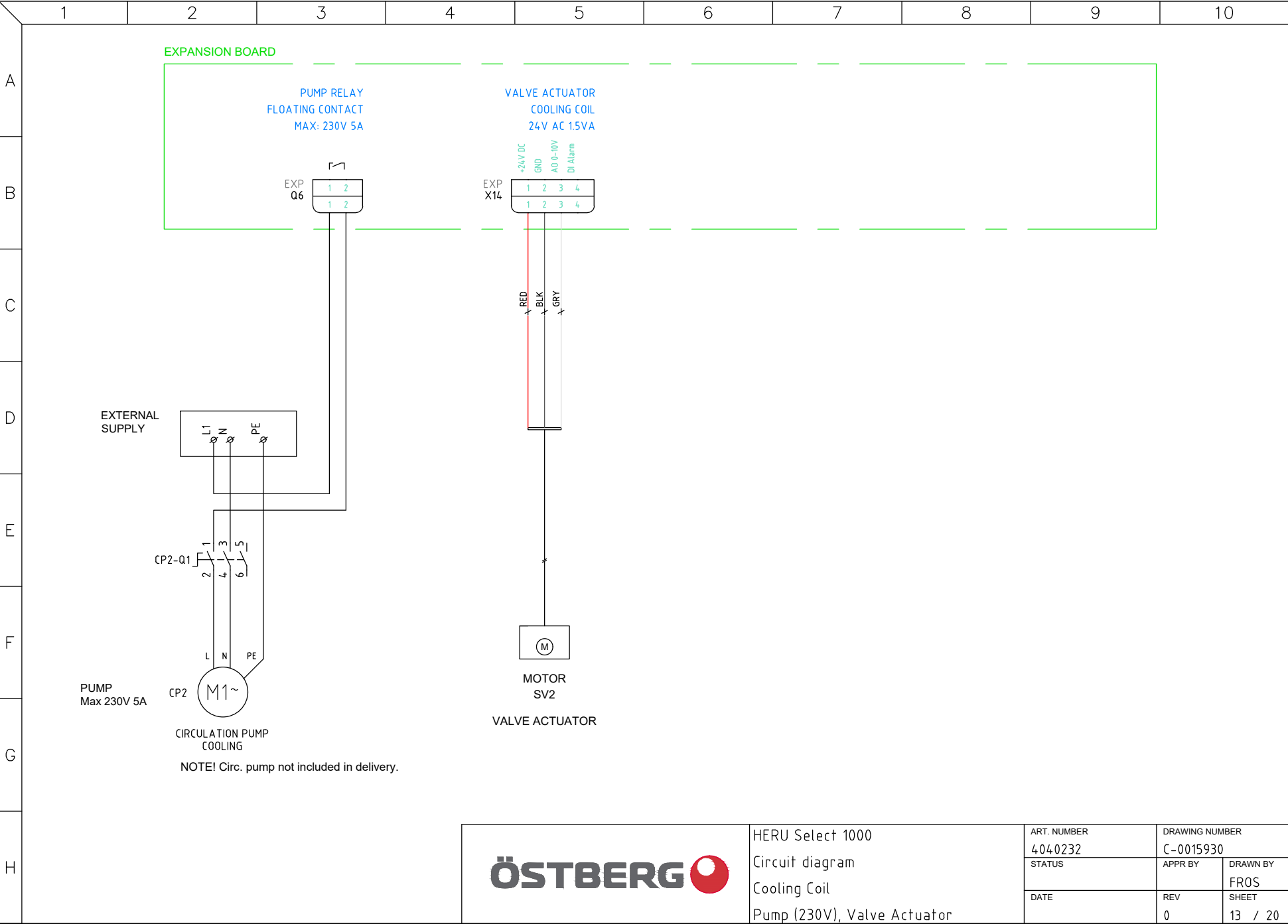


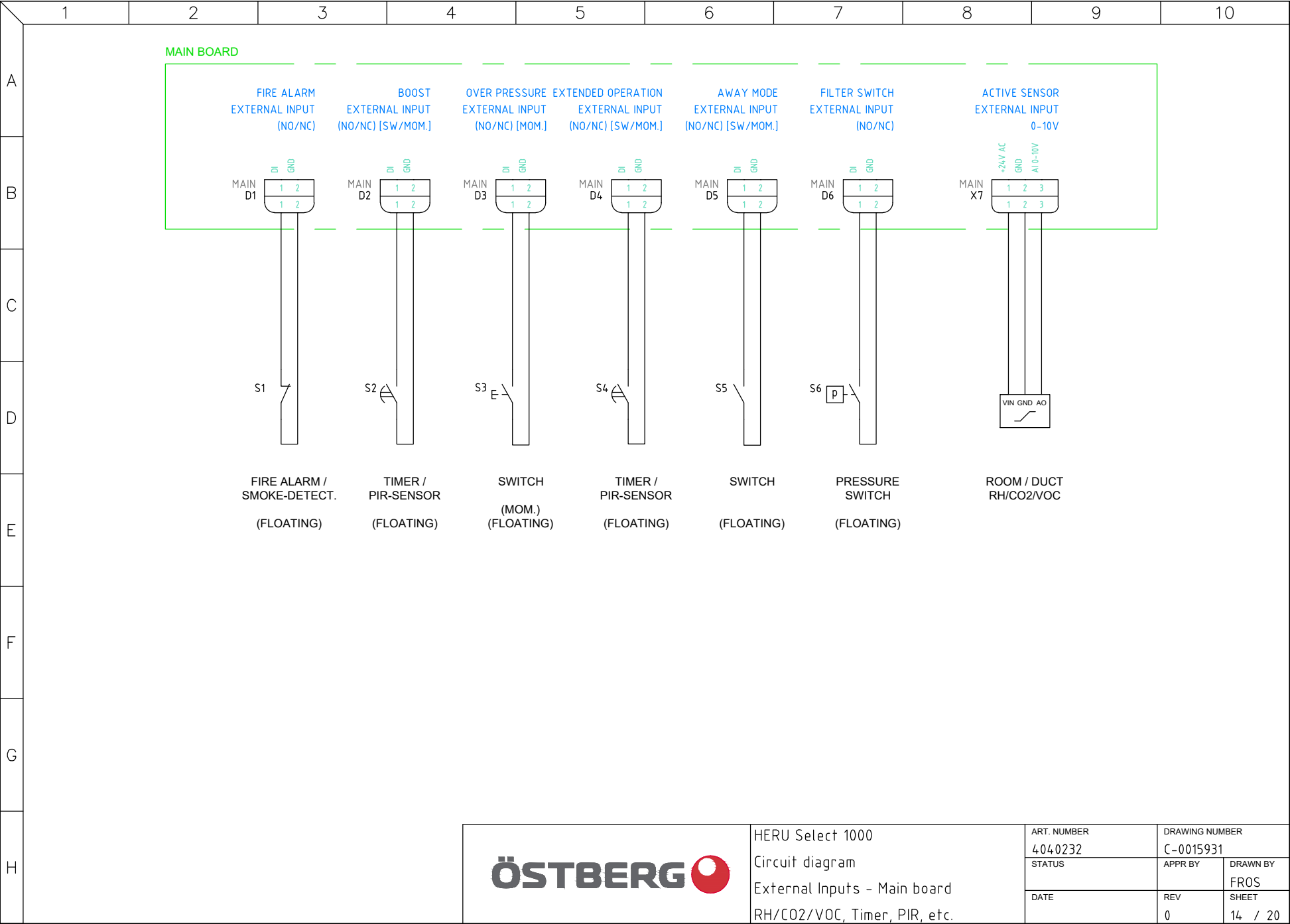
ÖSTBERG

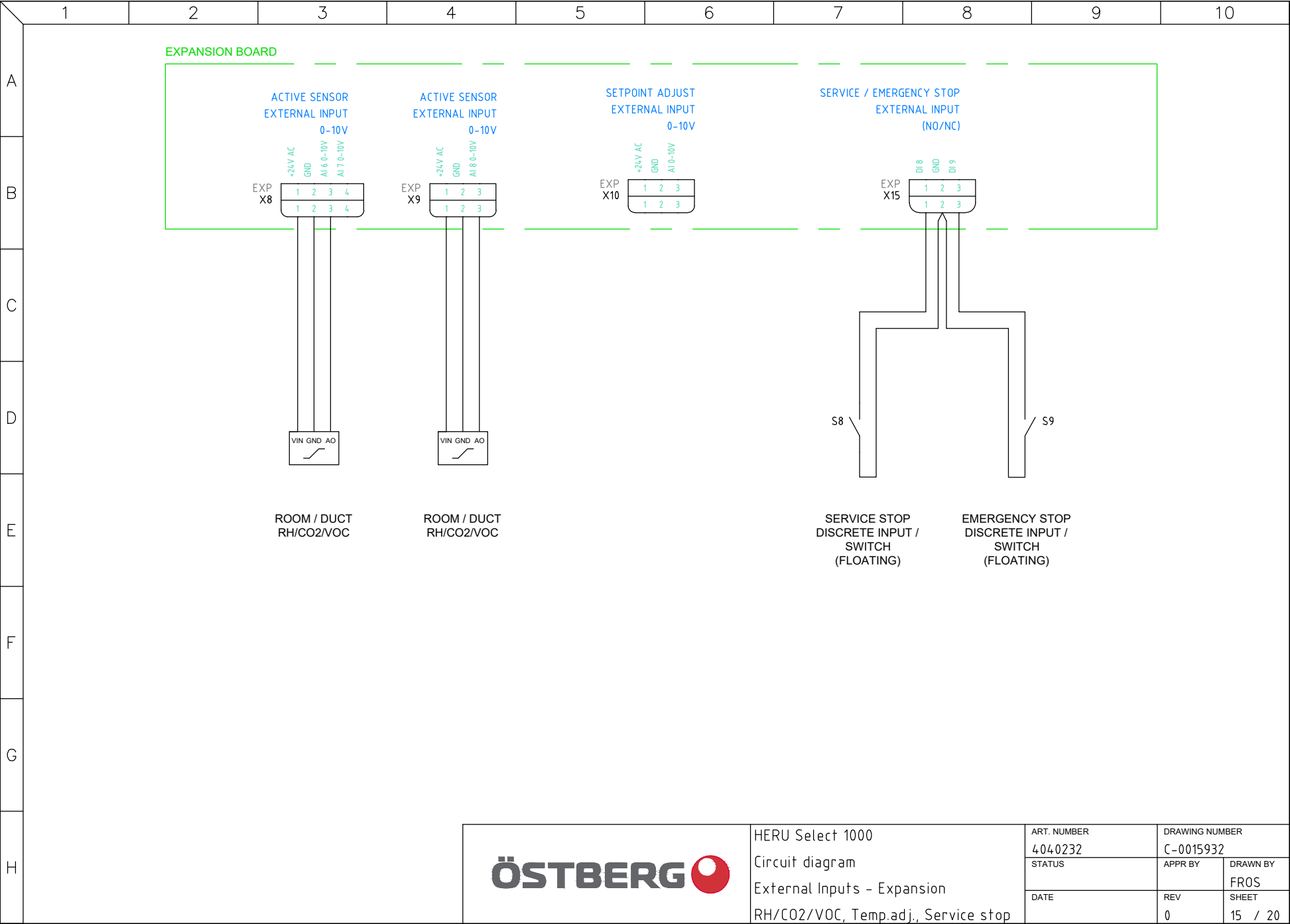
HERU Select 1000
Circuit diagram
After heater - Water - Left
Pump (230V), Valve Actuator

ART. NUMBER 404.0232	DRAWING NUMBER C-0015928	
STATUS	APPR BY	DRAWN BY FROS
DATE	REV 0	SHEET 11 / 20





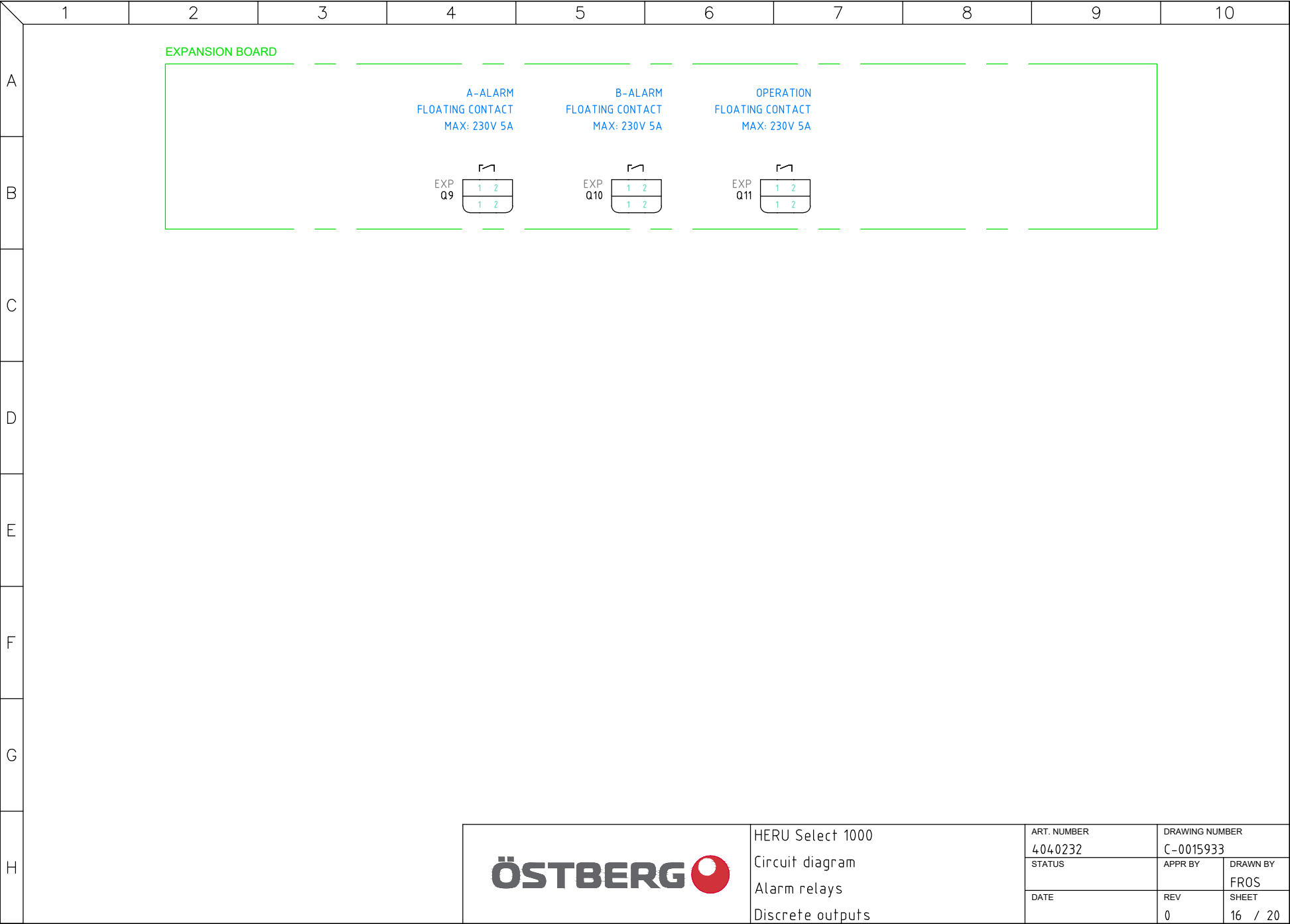


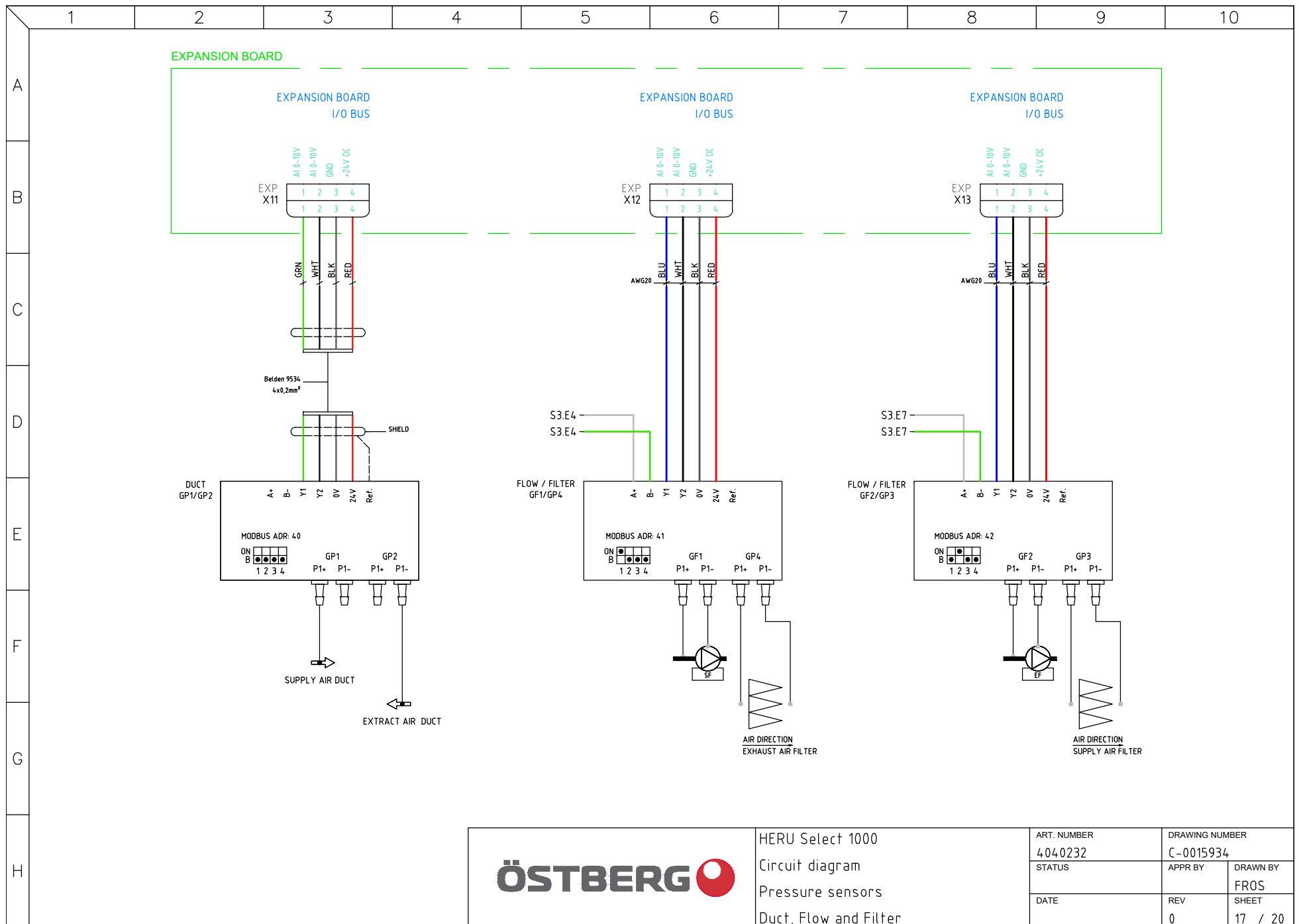


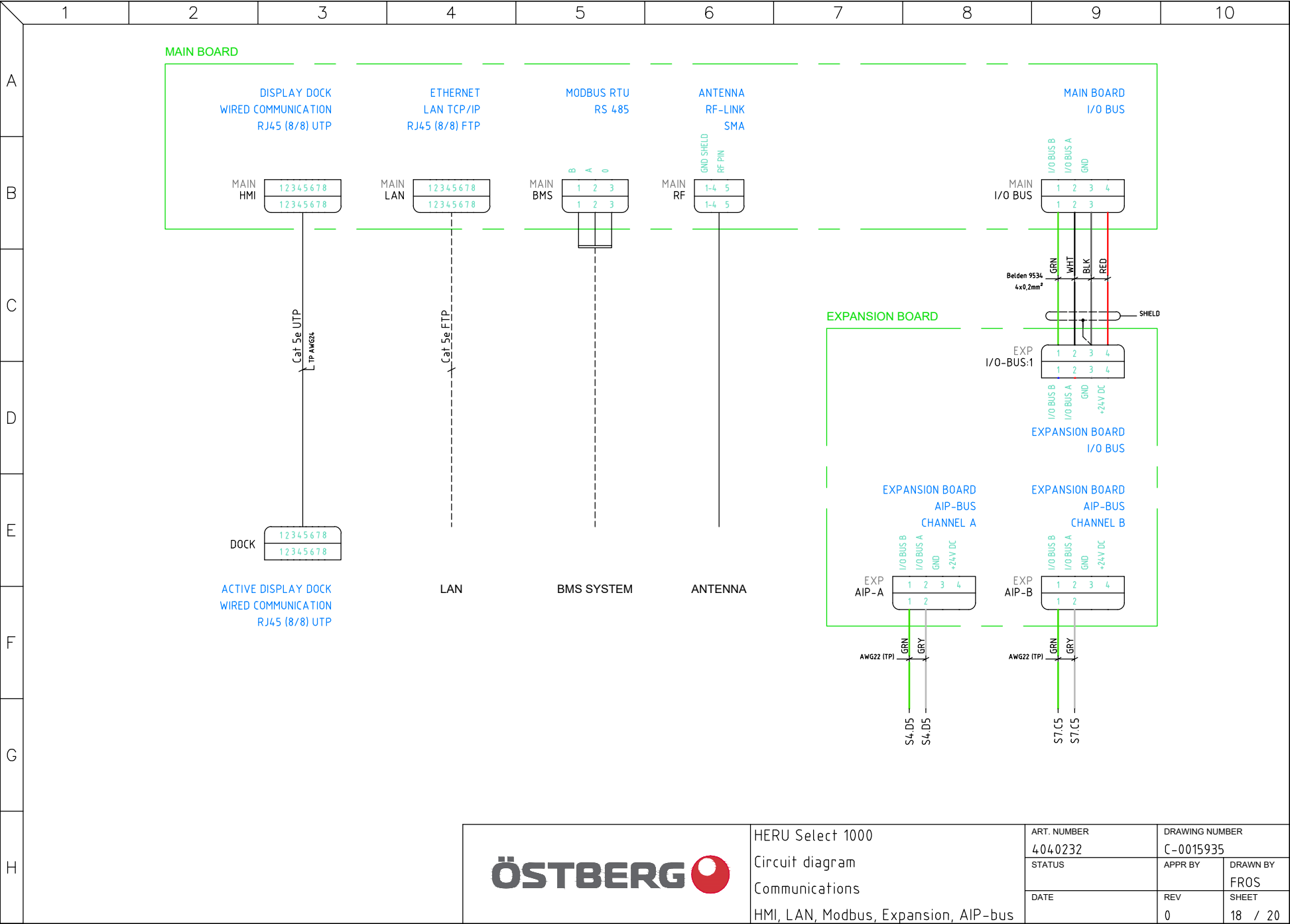
ÖSTBERG

HERU Select 1000
Circuit diagram
External Inputs - Expansion
RH/CO2/VOC, Temp.adj., Service stop

ART. NUMBER	DRAWING NUMBER	
4040232	C-0015932	
STATUS	APPR BY	DRAWN BY
		FRÖS
DATE	REV	SHEET
	0	15 / 20








	1	2	3	4	5	6	7	8	9	10
A										
B										
C										
D										
E										
F										
G										
H										

SH1	IECCMP1	PIN1	WLAY1	SH2	IECCMP2	PIN2
1	+EMI-BOX-MAIN	L1	RQ 2.5mm2-BRN	1	EMI Filter	L1
1	+EMI-BOX-MAIN	L2	RQ 2.5mm2-BLK	1	EMI Filter	L2
1	+EMI-BOX-MAIN	L3	RQ 2.5mm2-GRY	1	EMI Filter	L3
1	+EMI-BOX-MAIN	N	RQ 2.5mm2-BLU	1	EMI Filter	N
1	+EMI-BOX-MAIN	PE	RQ 2.5mm2-GRNYEL	1	EMI Filter	PE
1	EMI Filter	L1'	RQ 2.5mm2-BRN	1	+EMI-BOX-LOAD	L1
1	EMI Filter	L2'	RQ 2.5mm2-BLK	1	+EMI-BOX-LOAD	L2
1	EMI Filter	L3'	RQ 2.5mm2-GRY	1	+EMI-BOX-LOAD	L3
1	EMI Filter	N'	RQ 2.5mm2-BLU	1	+EMI-BOX-LOAD	N
1	+EMI-BOX-LOAD	L1	H05VV-F 2.5mm2-BRN	1	-MAIN	L1
1	+EMI-BOX-LOAD	L2	H05VV-F 2.5mm2-BLK	1	-MAIN	L2
1	+EMI-BOX-LOAD	L3	H05VV-F 2.5mm2-GRY	1	-MAIN	L3
1	+EMI-BOX-LOAD	N	H05VV-F 2.5mm2-BLU	1	-MAIN	N
1	+EMI-BOX-LOAD	PE	H05VV-F 2.5mm2-GRNYEL	1	-MAIN	PE
1	-MAIN	L1	RQ 2.5mm2-BRN	1	F3 Fuse	2
1	F3 Fuse	1	RQ 1.5mm2-BRN	1	-INT	L1
1	-MAIN	N	RQ 1.5mm2-BLU	1	-INT	N
1	-INT	L1	UL 1007-AWG 16-BRN	1	+PS-PS-CN1	3
1	-INT	N	UL 1007-AWG 16-BLU	1	+PS-PS-CN1	1
1	-INT	PE	UL 1007-AWG 20-GRNYEL	1	+PS-PE	1
1	-INT	PE	UL 1007-AWG 16-GRNYEL	1	+MAIN-PE	1
1	+MAIN-Exp.	2	UL 1007-AWG 16-BRN	1	+EXP-EXP-IN	1
1	+MAIN-Exp.	3	UL 1007-AWG 16-BLU	1	+EXP-EXP-IN	2
1	-DC 24V	+	UL 1007-AWG 20-RED	1	+PS-PS-CN2	2
1	-DC 24V	-	UL 1007-AWG 20-BLK	1	+PS-PS-CN2	1
2	-MAIN	L1	RQ 2.5mm2-BRN	2	F1 Fuse	2
2	-MAIN	L2	RQ 2.5mm2-BLK	2	F1 Fuse	4
2	-MAIN	L3	RQ 2.5mm2-GRY	2	F1 Fuse	6
2	F1 Fuse	2	RQ 2.5mm2-BRN	2	F2 Fuse	2
2	F1 Fuse	4	RQ 2.5mm2-BLK	2	F2 Fuse	4
2	F1 Fuse	6	RQ 2.5mm2-GRY	2	F2 Fuse	6
2	F1 Fuse	1	UL 1015-AWG 16-BRN	2	-CN1	10
2	F1 Fuse	3	UL 1015-AWG 16-BLK	2	-CN1	2
2	F1 Fuse	5	UL 1015-AWG 16-GRY	2	-CN1	11
2	F2 Fuse	1	UL 1015-AWG 16-BRN	2	-CN2	10
2	F2 Fuse	3	UL 1015-AWG 16-BLK	2	-CN2	2
2	F2 Fuse	5	UL 1015-AWG 16-GRY	2	-CN2	11
2	+MAIN-X1	1	UL 1007-AWG 20-YEL	2	-CN1	13
2	+MAIN-X1	2	UL 1007-AWG 20-WHT	2	-CN1	4
2	+MAIN-X1	3	UL 1007-AWG 20-BLK	2	-CN1	5
2	-CN1	1	UL 1015-AWG 16-GRNYEL	3	-M1-X1	1
2	-CN1	2	UL 1015-AWG 16-BLK	3	-M1-X1	2
2	-CN1	4	UL 1007-AWG 20-WHT	3	-M1-X1	4
2	-CN1	5	UL 1007-AWG 20-BLK	3	-M1-X1	5
2	-CN1	5	UL 1007-AWG 20-GRY	2	-CN1	12
2	-CN1	8	UL 1007-AWG 22-GRY	3	-M1-X1	6
2	-CN1	10	UL 1015-AWG 16-BRN	3	-M1-X1	8
2	-CN1	11	UL 1015-AWG 16-GRY	3	-M1-X1	9
2	-CN1	12	UL 1007-AWG 20-GRY	3	-M1-X1	10
2	-CN1	13	UL 1007-AWG 20-YEL	3	-M1-X1	11
2	-CN1	16	UL 1007-AWG 22-GRN	3	-M1-X1	12


SH1	IECCMP1	PIN1	WLAY1	SH2	IECCMP2	PIN2
2	+MAIN-X2	1	UL 1007-AWG 20-YEL	2	-CN2	13
2	+MAIN-X2	2	UL 1007-AWG 20-WHT	2	-CN2	4
2	+MAIN-X2	3	UL 1007-AWG 20-BLK	2	-CN2	5
2	-CN2	1	UL 1015-AWG 16-GRNYEL	3	-M2-X1	1
2	-CN2	2	UL 1015-AWG 16-BLK	3	-M2-X1	2
2	-CN2	4	UL 1007-AWG 20-WHT	3	-M2-X1	4
2	-CN2	5	UL 1007-AWG 20-BLK	3	-M2-X1	5
2	-CN2	5	UL 1007-AWG 20-GRY	2	-CN2	12
2	-CN2	8	UL 1007-AWG 22-GRY	3	-M2-X1	6
2	-CN2	10	UL 1015-AWG 16-BRN	3	-M2-X1	8
2	-CN2	11	UL 1015-AWG 16-GRY	3	-M2-X1	9
2	-CN2	12	UL 1007-AWG 20-GRY	3	-M2-X1	10
2	-CN2	13	UL 1007-AWG 20-YEL	3	-M2-X1	11
2	-CN2	16	UL 1007-AWG 22-GRN	3	-M2-X1	12
4	-Motor Controller	L	UL 1007-AWG 16-BRN	4	-M3-X1	8
4	-Motor Controller	N	UL 1007-AWG 16-BLU	4	-M3-X1	7
4	-Motor Controller	PE	UL 1007-AWG 16-GRNYEL	4	-M3-X1	1
4	-Motor Controller	2	UL 1007-AWG 20-YEL	4	-M3-X1	4
4	-Motor Controller	3	UL 1007-AWG 20-BLK	4	-M3-X1	9
4	-Motor Controller	3	UL 1007-AWG 20-BLK	4	-Motor Controller	15
4	-Motor Controller	13	UL 1007-AWG 20-WHT	4	-M3-X1	11
4	-Motor Controller	A	UL 1007-AWG 22-GRY	4	-M3-X1	6
4	-Motor Controller	B	UL 1007-AWG 22-GRN	4	-M3-X1	12
4	-INT	N	UL 1007-AWG 16-BRN	4	-M3-X1	8
4	-INT	PE	UL 1007-AWG 16-GRNYEL	4	-M3-X1	1
4	-INT	L1	UL 1007-AWG 16-BLU	4	-M3-X1	7
4	-M3-X1	6	UL 1007-AWG 22-GRY	4	-MB-X1	1
4	-MB-X1	1	UL 1007-AWG 22-GRY	6	-HT-R	6
4	-M3-X1	12	UL 1007-AWG 22-GRN	4	-MB-X1	2
4	-MB-X1	2	UL 1007-AWG 22-GRN	6	-HT-R	12
4	+MAIN-DI-2W	1	UL 1007-AWG 20-BRN	4	-GR1	1
4	+MAIN-DI-2W	2	UL 1007-AWG 20-WHT	4	-GR1	2
4	+MAIN-X3	2	UL 1007-AWG 20-YEL	4	-M3-X1	4
4	+MAIN-X3	3	UL 1007-AWG 20-GRN	4	-M3-X1	10
4	+MAIN-X3	4	UL 1007-AWG 20-BLK	4	-M3-X1	9
4	+MAIN-X3	5	UL 1007-AWG 20-BLU	4	-M3-X1	5
4	+MAIN-X3	6	UL 1007-AWG 20-WHT	4	-M3-X1	11
4	-DC 24V	+	UL 1007-AWG 20-RED	4	-M3-X1	3
4	-DC 24V	-	UL 1007-AWG 20-GRY	4	-M3-X1	2
5	+MAIN-T1	1	UL 1007-AWG 20-RED	5	-GT1	1
5	+MAIN-T1	2	UL 1007-AWG 20-WHT	5	-GT1	2
5	+MAIN-T2	1	UL 1007-AWG 20-ORG	5	-GT2	1
5	+MAIN-T2	2	UL 1007-AWG 20-WHT	5	-GT2	2
5	+MAIN-T3	1	UL 1007-AWG 20-YEL	5	-GT3	1
5	+MAIN-T3	2	UL 1007-AWG 20-WHT	5	-GT3	2
5	+MAIN-T4	1	UL 1007-AWG 20-GRN	5	-GT4	1
5	+MAIN-T4	2	UL 1007-AWG 20-WHT	5	-GT4	2
5	+MAIN-T6	1	UL 1007-AWG 20-BRN	5	-GT7	1
5	+MAIN-T6	2	UL 1007-AWG 20-WHT	5	-GT7	2

	HERU Select 1000	ART. NUMBER	DRAWING NUMBER	
	Circuit diagram	4040232	C-0015936	
	Wire Run List	STATUS	APPR BY	DRAWN BY
			FROS	
		DATE	REV	SHEET
			0	19 / 20

	1	2	3	4	5	6	7	8	9	10
A										
B										
C										
D										
E										
F										
G										
H										

SH1	IECCMP1	PIN1	WLAY1	SH2	IECCMP2	PIN2
6	+HT-K1	2 T1	RQ 2.5mm2-BRN	6	Pulser	L1-IN
6	+HT-K1	4 T2	RQ 2.5mm2-BLK	6	Pulser	L2-IN
6	+HT-K1	6 T3	RQ 2.5mm2-GRY	6	Pulser	L3-IN
6	Pulser	L1-OUT	RQ 2.5mm2-BRN	6	+HT-COIL R1:1	1
6	+HT-COIL R1:1	1	RQ 2.5mm2-BRN	6	+HT-COIL R2:1	1
6	Pulser	L2-OUT	RQ 2.5mm2-BLK	6	+HT-COIL R1:2	1
6	+HT-COIL R1:2	1	RQ 2.5mm2-BLK	6	+HT-COIL R2:2	1
6	Pulser	L3-OUT	RQ 2.5mm2-GRY	6	+HT-COIL R1:3	1
6	+HT-COIL R1:3	1	RQ 2.5mm2-GRY	6	+HT-COIL R2:3	1
6	+HT-COIL R1:1	2	RQ 2.5mm2-BRN	6	+HT-COIL R1:2	2
6	+HT-COIL R1:2	2	RQ 2.5mm2-BRN	6	+HT-COIL R1:3	2
6	+HT-COIL R2:1	2	RQ 2.5mm2-BRN	6	+HT-COIL R2:2	2
6	+HT-COIL R2:2	2	RQ 2.5mm2-BRN	6	+HT-COIL R2:3	2
6	-INT	L1	UL 1007-AWG 16-BRN	6	-HT-R	1
6	-HT-X	1	UL 1007-AWG 16-BRN	6	+HT-K1	A1
6	+HT-K1	A2	RQ 1.5mm2-BLK	6	+HT-TP-M	2
6	+HT-TP-M	1	RQ 1.5mm2-BLK	6	+HT-TP-A	1
6	+HT-TP-A	2	RQ 1.5mm2-BLU	6	+HT-X3	1
6	+HT-X3	1	UL 1007-AWG 16-BLU	6	-HT-X	7
6	-HT-R	7	UL 1007-AWG 16-BLU	6	-INT	N
6	-HT-X	3	UL 1007-AWG 20-ORG	6	Pulser	2
6	-HT-X	8	UL 1007-AWG 20-BLK	6	Pulser	1
6	Pulser	1	UL 1007-AWG 20-BLK	6	+HT-K1	14 NO
6	+HT-K1	13 NO	UL 1007-AWG 20-WHT	6	-HT-X	10
6	+MAIN-RC-X5 (R)	1	UL 1007-AWG 20-RED	6	-HT-R	2
6	+MAIN-RC-X5 (R)	2	UL 1007-AWG 20-ORG	6	-HT-R	3
6	+MAIN-RC-X5 (R)	3	UL 1007-AWG 20-YEL	6	-HT-R	4
6	+MAIN-RC-X5 (R)	4	UL 1007-AWG 20-BLK	6	-HT-R	8
6	+MAIN-RC-X5 (R)	6	UL 1007-AWG 20-WHT	6	-HT-R	10
6	-HT-R	6	UL 1007-AWG 22-GRY	2	-CN1	8
6	-HT-R	12	UL 1007-AWG 22-GRN	2	-CN1	16
6	+MAIN-D7	1	RQ 0.75mm2-BRN	6	-GP5	1
6	+MAIN-D7	2	RQ 0.75mm2-BLU	6	-GP5	2
7	+HT-K1	2 T1	RQ 2.5mm2-BRN	6	Pulser	L1-IN
7	+HT-K1	4 T2	RQ 2.5mm2-BLK	6	Pulser	L2-IN
7	+HT-K1	6 T3	RQ 2.5mm2-GRY	6	Pulser	L3-IN
7	Pulser	L1-OUT	RQ 2.5mm2-BRN	6	+HT-COIL R1:1	1
7	+HT-COIL R1:1	1	RQ 2.5mm2-BRN	6	+HT-COIL R2:1	1
7	Pulser	L2-OUT	RQ 2.5mm2-BLK	6	+HT-COIL R1:2	1
7	+HT-COIL R1:2	1	RQ 2.5mm2-BLK	6	+HT-COIL R2:2	1
7	Pulser	L3-OUT	RQ 2.5mm2-GRY	6	+HT-COIL R1:3	1
7	+HT-COIL R1:3	1	RQ 2.5mm2-GRY	6	+HT-COIL R2:3	1
7	+HT-COIL R1:1	2	RQ 2.5mm2-BRN	6	+HT-COIL R1:2	2
7	+HT-COIL R1:2	2	RQ 2.5mm2-BRN	6	+HT-COIL R1:3	2
7	+HT-COIL R2:1	2	RQ 2.5mm2-BRN	6	+HT-COIL R2:2	2
7	+HT-COIL R2:2	2	RQ 2.5mm2-BRN	6	+HT-COIL R2:3	2
7	-INT	L1	UL 1007-AWG 16-BRN	6	-HT-L	1
7	-HT-X	1	UL 1007-AWG 16-BRN	6	+HT-K1	A1
7	+HT-K1	A2	RQ 1.5mm2-BLK	6	+HT-TP-M	2
7	+HT-TP-M	1	RQ 1.5mm2-BLK	6	+HT-TP-A	1
7	+HT-TP-A	2	RQ 1.5mm2-BLU	6	+HT-X3	1
7	+HT-X3	1	UL 1007-AWG 16-BLU	6	-HT-X	7

SH1	IECCMP1	PIN1	WLAY1	SH2	IECCMP2	PIN2
7	-HT-X	3	UL 1007-AWG 20-ORG	6	Pulser	2
7	-HT-X	8	UL 1007-AWG 20-BLK	6	Pulser	1
7	Pulser	1	UL 1007-AWG 20-BLK	6	+HT-K1	14 NO
7	+HT-K1	13 NO	UL 1007-AWG 20-WHT	6	-HT-X	10
7	+MAIN-RC-X5 (L)	1	UL 1007-AWG 20-RED	6	-HT-L	2
7	+MAIN-RC-X5 (L)	2	UL 1007-AWG 20-ORG	6	-HT-L	3
7	+MAIN-RC-X5 (L)	3	UL 1007-AWG 20-YEL	6	-HT-L	4
7	+MAIN-RC-X5 (L)	4	UL 1007-AWG 20-BLK	6	-HT-L	8
7	+MAIN-RC-X5 (L)	6	UL 1007-AWG 20-WHT	6	-HT-L	10
7	-HT-L	6	UL 1007-AWG 22-GRY	2	-CN2	8
7	-HT-L	12	UL 1007-AWG 22-GRN	2	-CN2	16
7	+MAIN-D7	1	RQ 0.75mm2-BRN	6	-GP5	1
7	+MAIN-D7	2	RQ 0.75mm2-BLU	6	-GP5	2
8	-HT-X	5	UL 1007-AWG 20-BLU	8	-GT5	1
8	-HT-X	11	UL 1007-AWG 20-WHT	8	-GT5	2
8	+MAIN-RC-T5 (R)	1	UL 1007-AWG 20-BLU	8	-HT-R	5
8	+MAIN-RC-T5 (R)	2	UL 1007-AWG 20-WHT	8	-HT-R	11
9	-HT-X	5	UL 1007-AWG 20-BLU	9	-GT5	1
9	-HT-X	11	UL 1007-AWG 20-WHT	9	-GT5	2
9	+MAIN-RC-T5 (L)	1	UL 1007-AWG 20-BLU	9	-HT-L	5
9	+MAIN-RC-T5 (L)	2	UL 1007-AWG 20-WHT	9	-HT-L	11
10	-HT-X	5	UL 1007-AWG 20-BLU	10	-GT5	1
10	-HT-X	11	UL 1007-AWG 20-WHT	10	-GT5	2
10	+MAIN-RC-T5 (R)	1	UL 1007-AWG 20-BLU	10	-HT-R	5
10	+MAIN-RC-T5 (R)	2	UL 1007-AWG 20-WHT	10	-HT-R	11
11	-HT-X	5	UL 1007-AWG 20-BLU	11	-GT5	1
11	-HT-X	11	UL 1007-AWG 20-WHT	11	-GT5	2
11	+MAIN-RC-T5 (L)	1	UL 1007-AWG 20-BLU	11	-HT-L	5
11	+MAIN-RC-T5 (L)	2	UL 1007-AWG 20-WHT	11	-HT-L	11
17	+EXP-X11	1	UL 1007-AWG 24-GRN	17	-DUCT GP1/GP2	Y1
17	+EXP-X11	2	UL 1007-AWG 24-WHT	17	-DUCT GP1/GP2	Y2
17	+EXP-X11	3	UL 1007-AWG 24-BLK	17	-DUCT GP1/GP2	OV
17	+EXP-X11	4	UL 1007-AWG 24-RED	17	-DUCT GP1/GP2	24V
17	+EXP-X12	1	UL 1007-AWG 20-BLU	17	-FLOW/FILTER GF1/GP4	Y1
17	+EXP-X12	2	UL 1007-AWG 20-WHT	17	-FLOW/FILTER GF1/GP4	Y2
17	+EXP-X12	3	UL 1007-AWG 20-BLK	17	-FLOW/FILTER GF1/GP4	OV
17	+EXP-X12	4	UL 1007-AWG 20-RED	17	-FLOW/FILTER GF1/GP4	24V
17	+EXP-X13	1	UL 1007-AWG 20-BLU	17	-FLOW/FILTER GF2/GP3	Y1
17	+EXP-X13	2	UL 1007-AWG 20-WHT	17	-FLOW/FILTER GF2/GP3	Y2
17	+EXP-X13	3	UL 1007-AWG 20-BLK	17	-FLOW/FILTER GF2/GP3	OV
17	+EXP-X13	4	UL 1007-AWG 20-RED	17	-FLOW/FILTER GF2/GP3	24V
18	+EXP-AIP-A	1	UL 1007-AWG 22-GRN	4	-M3-X1	12
18	+EXP-AIP-A	2	UL 1007-AWG 22-GRY	4	-M3-X1	6
18	+EXP-AIP-B	1	UL 1007-AWG 22-GRN	7	-HT-L	12
18	+EXP-AIP-B	2	UL 1007-AWG 22-GRY	7	-HT-L	6
18	+MAIN-I/O BUS	1	UL 1007-AWG 24-GRN	18	+EXP-I/O-BUS:1	1
18	+MAIN-I/O BUS	2	UL 1007-AWG 24-WHT	18	+EXP-I/O-BUS:1	2
18	+MAIN-I/O BUS	3	UL 1007-AWG 24-BLK	18	+EXP-I/O-BUS:1	3
18	+MAIN-I/O BUS	4	UL 1007-AWG 24-RED	18	+EXP-I/O-BUS:1	4



HERU Select 1000
Circuit diagram
Wire Run List

ART. NUMBER	4040232	
STATUS	APPR BY	DRAWN BY
DATE	REV	SHEET
	0	20 / 20