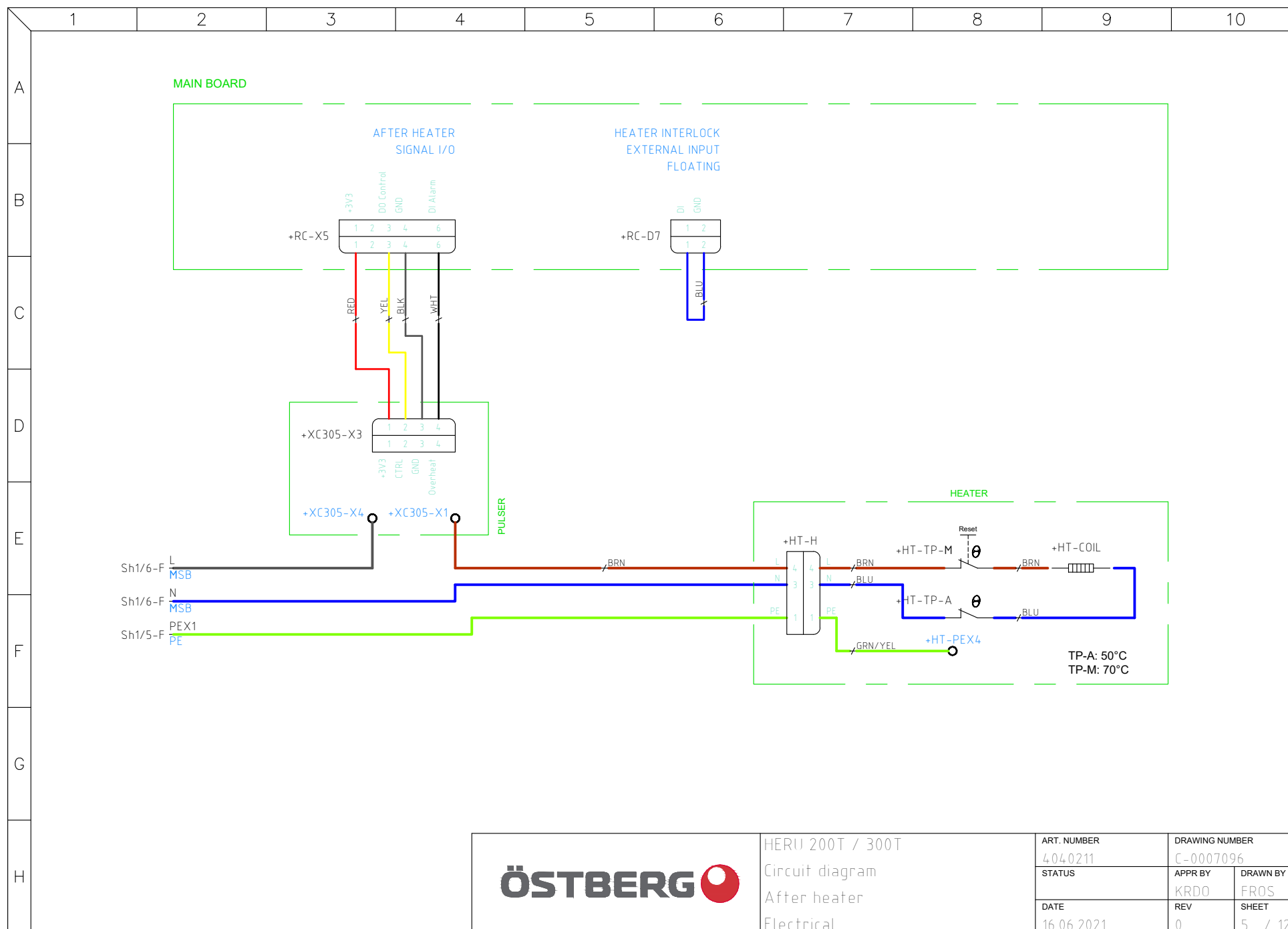
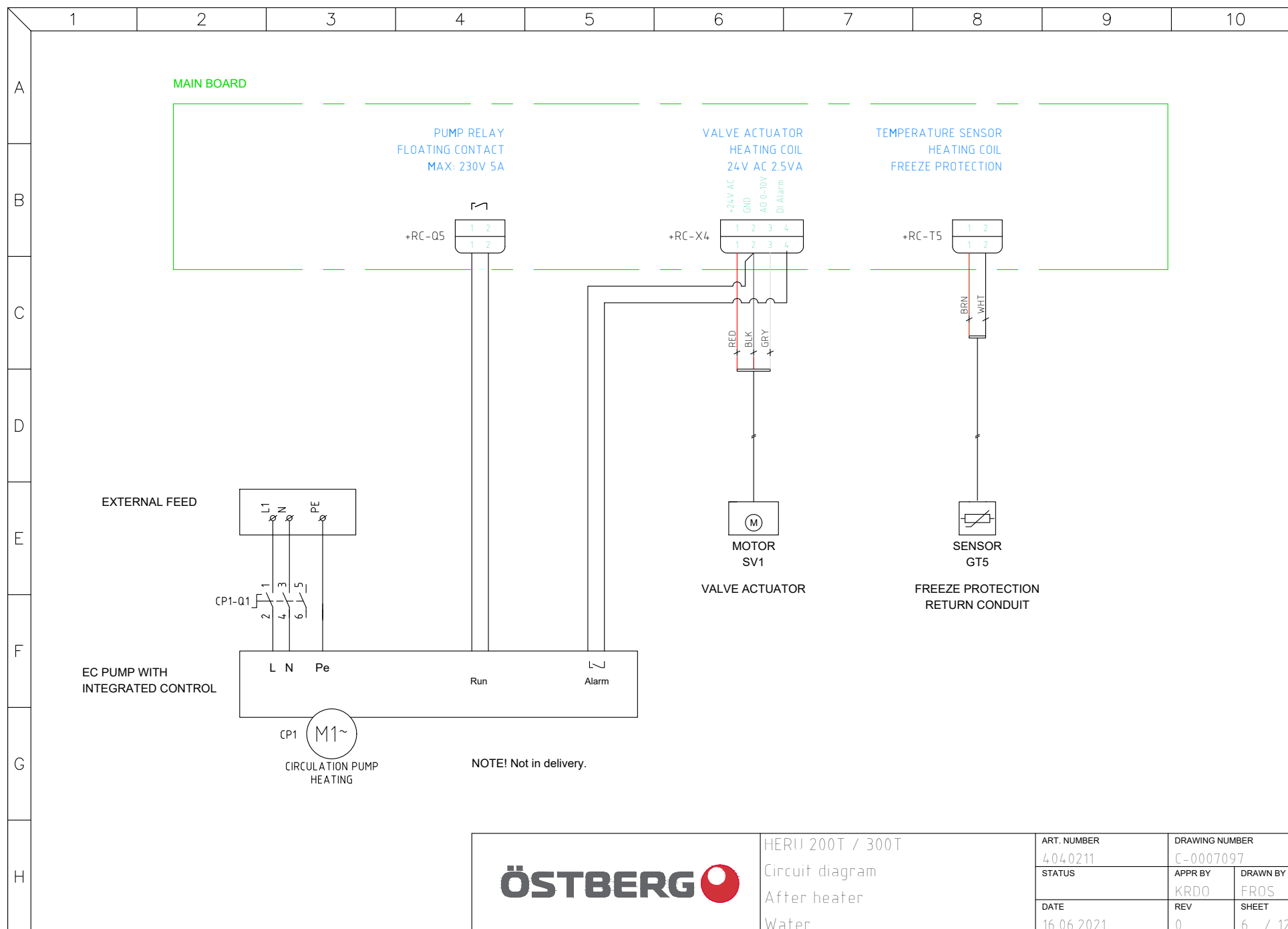


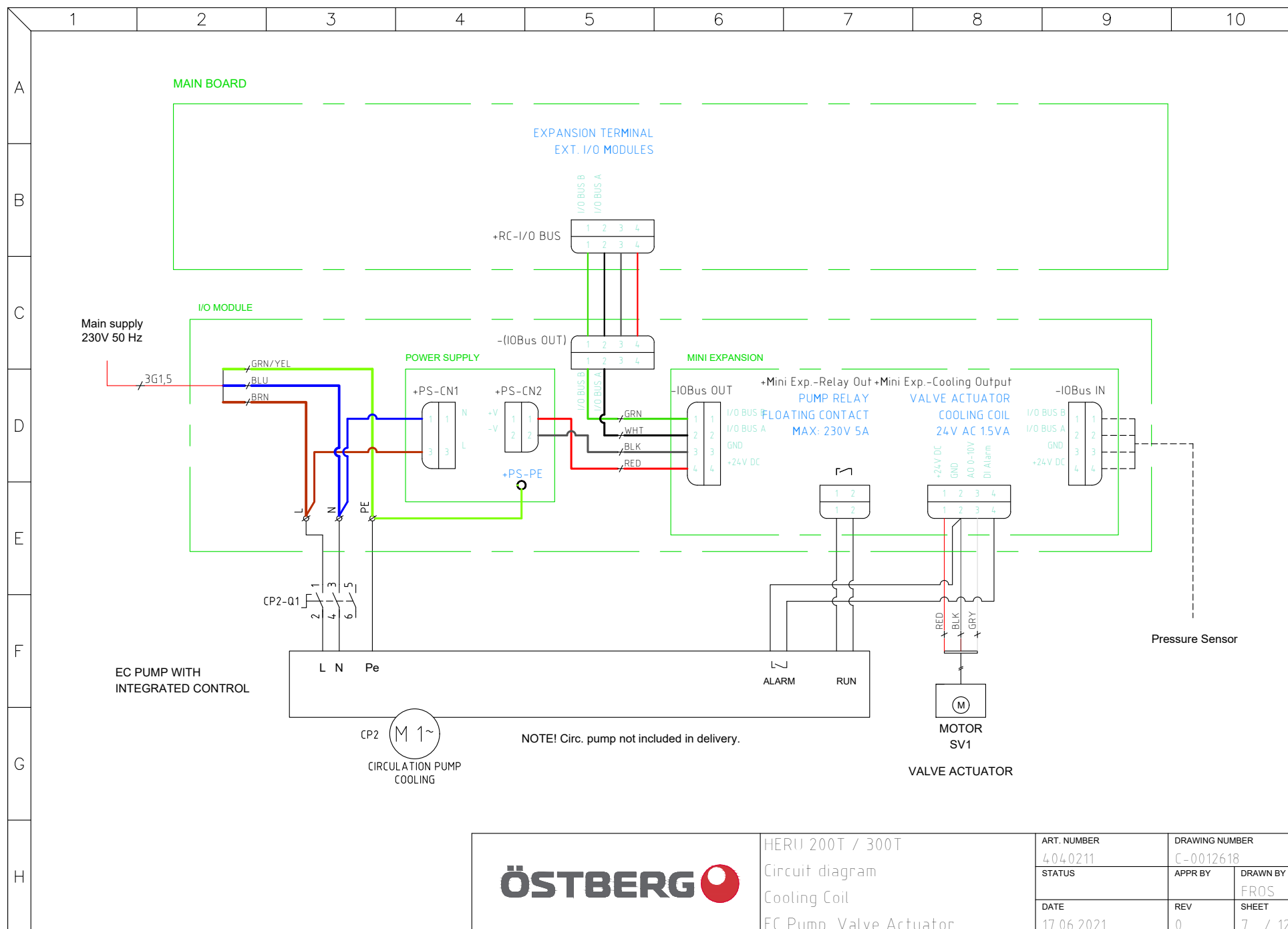
ÖSTBERG

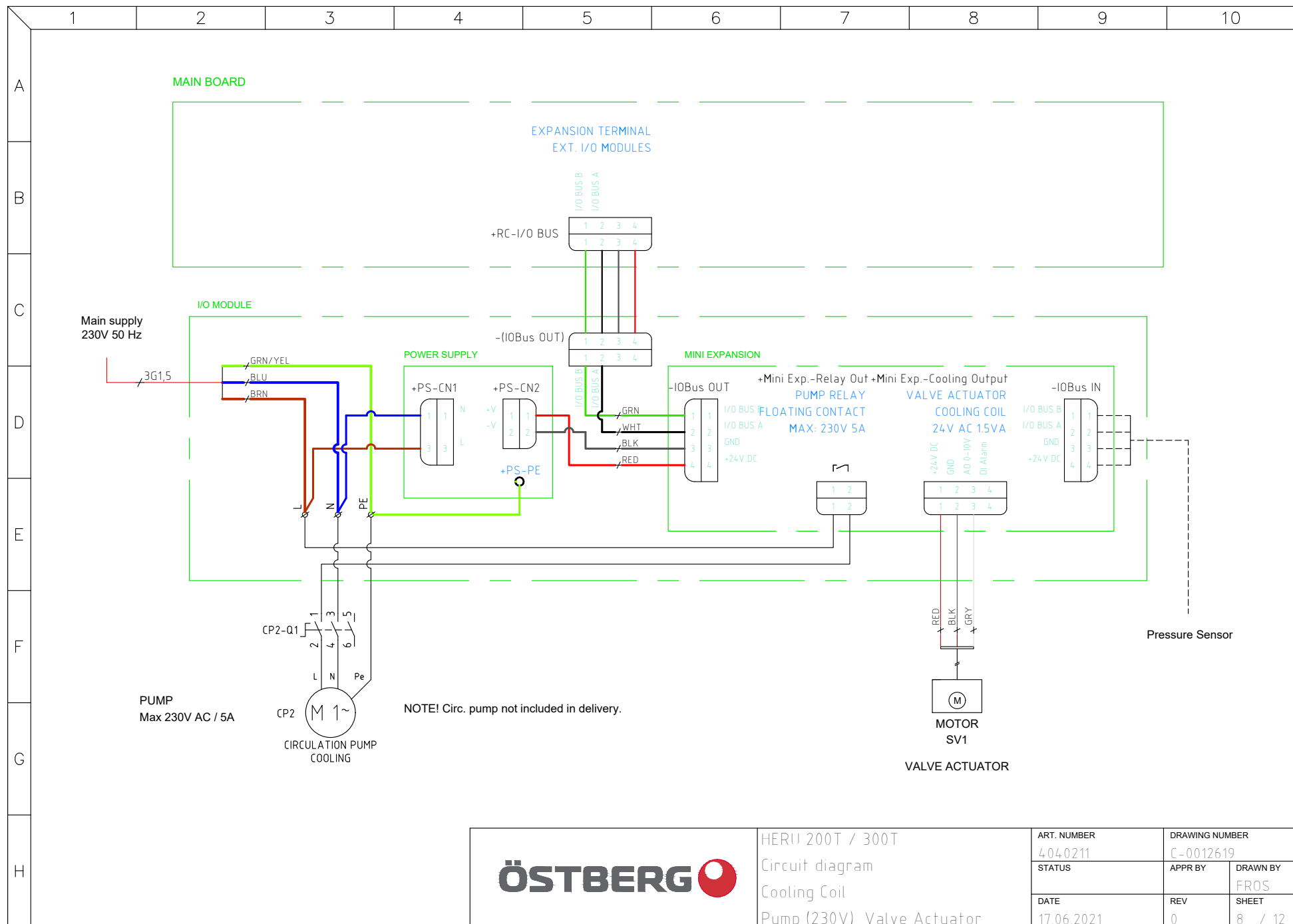
HERU 200T / 300T
Circuit diagram
Temperature Sensors
Standard

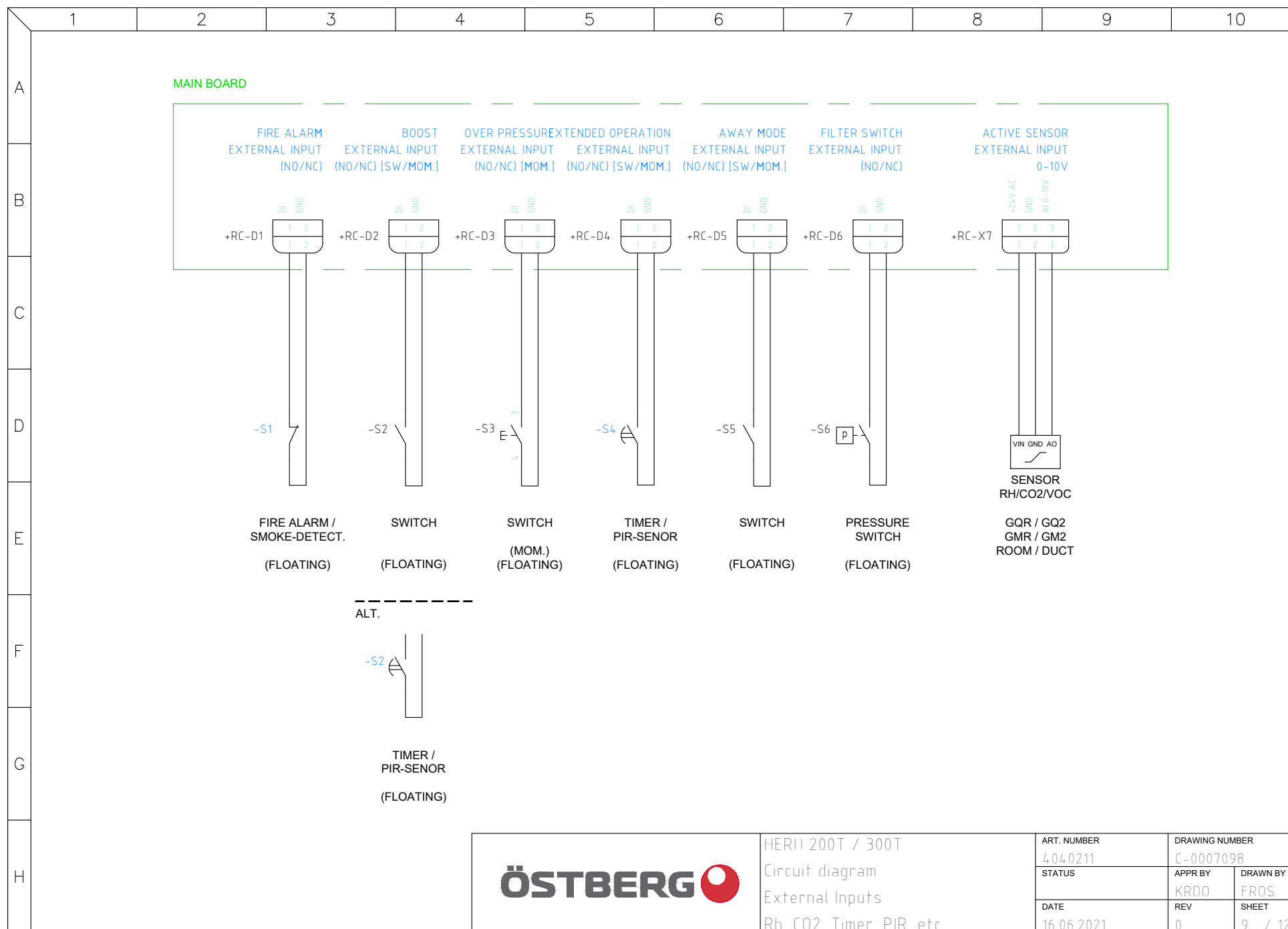
ART. NUMBER	DRAWING NUMBER	
4040211	C-0007095	
STATUS	APPR BY	DRAWN BY
	KRDO	FRÖS
DATE	REV	SHEET
16.06.2021	0	4 / 12



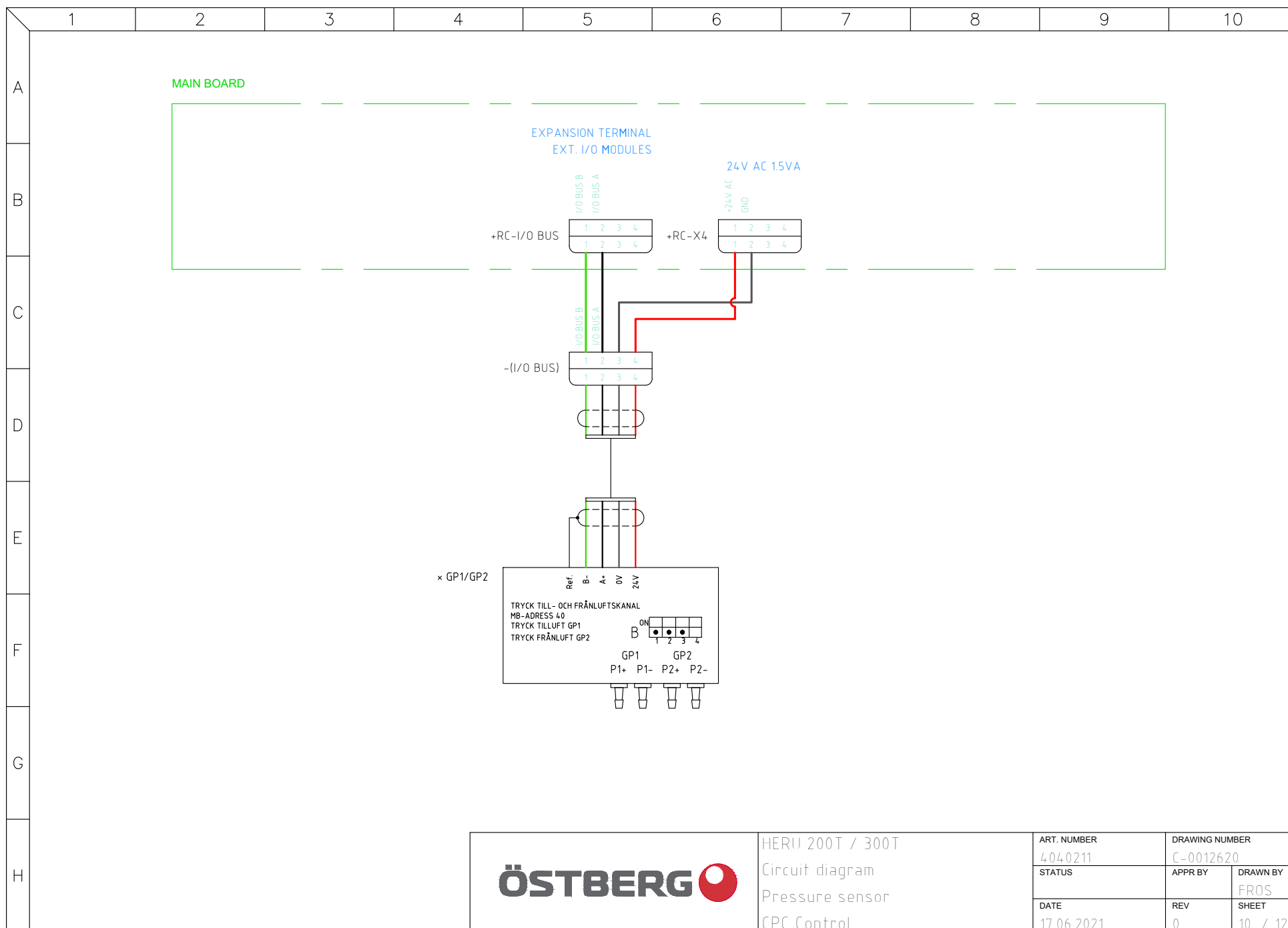


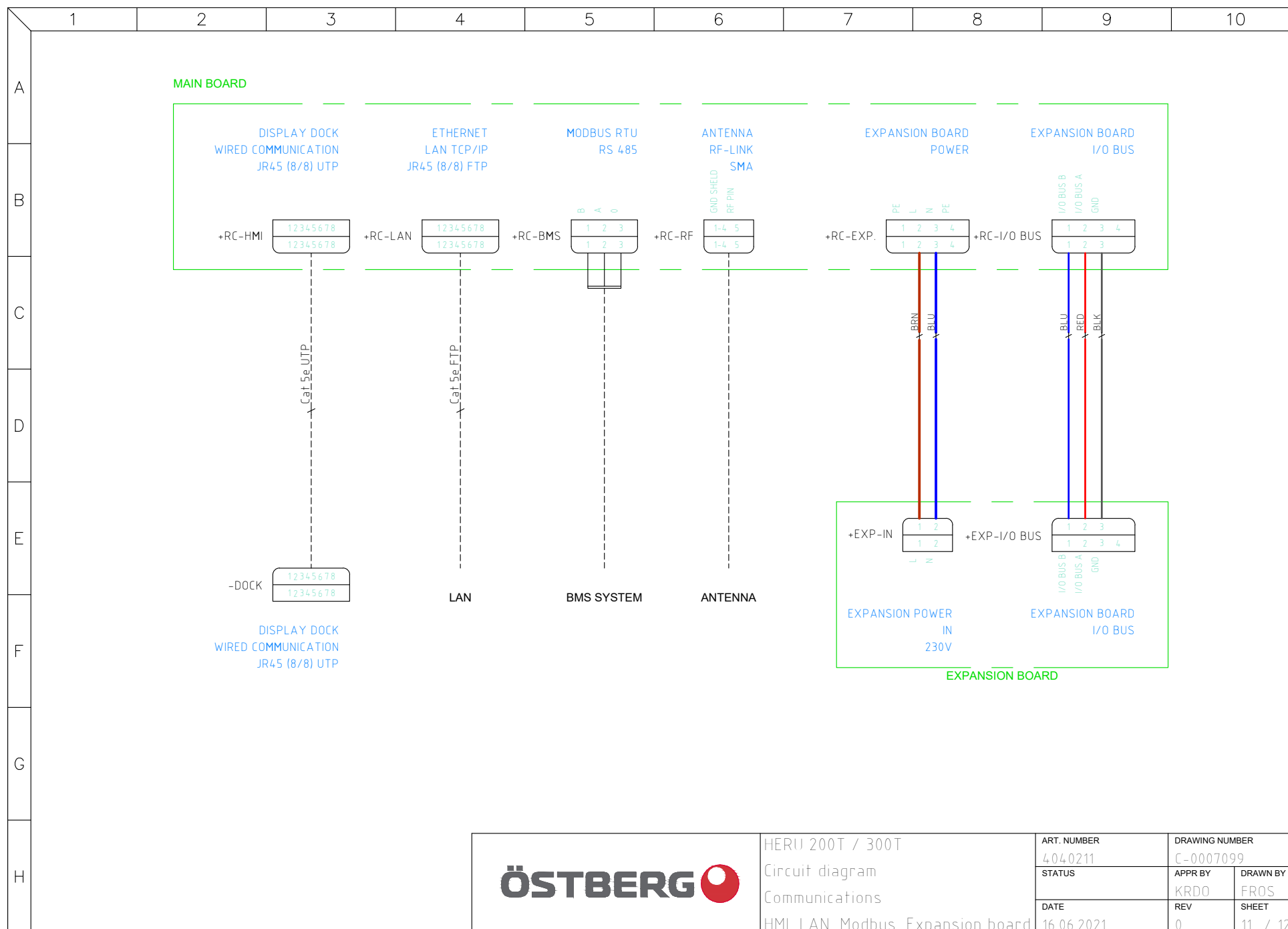






ART. NUMBER		DRAWING NUMBER	
4040211		C-0007098	
STATUS		APPR BY	DRAWN BY
		KRDO	FRÖS
DATE		REV	SHEET
16.06.2021		0	9 / 12





	1	2	3	4	5	6	7	8	9	10
A										
B										
C										
D										
E										
F										
G										
H										

1

1

SH1	IECCMP1	PIN1	WLAY1	SH2	IECCMP2	PIN2
1	+PEX1-2		UL 1007-AWG 16-GRNYEL	5	+HT-H	1
1	+RC-MSb	1	UL 1007-AWG 16-BLU	5	+HT-H	3
1	MAIN		RQ 2.5mm2-BLK	1	+L2X1-1	1
1	+PEX2-1	1	UL 1007-AWG 20-GRNYEL	2	+M1-X1	1
1	+PEX2-1	2	UL 1007-AWG 20-GRNYEL	2	+M2-X1	1
1	+PEX2-1	3	UL 1007-AWG 20-GRNYEL	3	+M3-X1	3
1	MAIN		RQ 2.5mm2-GRNYEL	1	+PEX1-1	
1	+RC-PE	1	UL 1007-AWG 16-GRNYEL	1	+PEX1-2	
1	+PEX1-2		UL 1007-AWG 16-GRNYEL	1	+PEX2-1	5
1	+PEX2-1	4	UL 1007-AWG 20-GRNYEL	3	+PS-PE	
1	MAIN		RQ 2.5mm2-BLU	1	+RC-MSa	1
1	MAIN		RQ 2.5mm2-BRN	1	+RC-MSa	2
1	+L2X1-1	2	UL 1007-AWG 16-BLK	5	+XC305-X4	
2	+RC-Q1	1	UL 1007-AWG 20-BRN	2	+M1-X1	6
2	+RC-Q1	2	UL 1007-AWG 20-BLU	2	+M1-X1	5
2	+RC-X1	1	UL 1007-AWG 22-YEL	2	+M1-X1	8
2	+RC-X1	2	UL 1007-AWG 22-WHT	2	+M1-X1	3
2	+RC-X1	3	UL 1007-AWG 22-BLK	2	+M1-X1	4
2	+RC-Q2	1	UL 1007-AWG 20-BRN	2	+M2-X1	6
2	+RC-Q2	2	UL 1007-AWG 20-BLU	2	+M2-X1	5
2	+RC-X2	1	UL 1007-AWG 22-YEL	2	+M2-X1	8
2	+RC-X2	2	UL 1007-AWG 22-WHT	2	+M2-X1	3
2	+RC-X2	3	UL 1007-AWG 22-BLK	2	+M2-X1	4
3	+RC-MSc	1	UL 1007-AWG 20-BRN	3	+PS-CN1	3
3	+RC-MSc	2	UL 1007-AWG 20-BLU	3	+PS-CN1	1
3	+PS-CN2	2	UL 1007-AWG 20-RED	3	+M3-X1	4
3	+PS-CN2	1	UL 1007-AWG 20-GRY	3	+M3-X1	5
3	+M3-X1	3	UL 1007-AWG 20-GRNYEL	3	+M3-PEX3	
3	+RC-X3	3	UL 1007-AWG 22-GRN	3	+M3-X1	1
3	+RC-X3	4	UL 1007-AWG 22-BLK	3	+M3-X1	2
3	+RC-DI-2W	1	UL 1007-AWG 22-BRN	3	-GR1	1
3	+RC-DI-2W	2	UL 1007-AWG 22-WHT	3	-GR1	2
4	+RC-T1	1	UL 1007-AWG 22-RED	4	-GT1	1
4	+RC-T1	2	UL 1007-AWG 22-WHT	4	-GT1	2
4	+RC-T2	1	UL 1007-AWG 22-ORG	4	-GT2	1
4	+RC-T2	2	UL 1007-AWG 22-WHT	4	-GT2	2
4	+RC-T3	1	UL 1007-AWG 22-YEL	4	-GT3	1
4	+RC-T3	2	UL 1007-AWG 22-WHT	4	-GT3	2
4	+RC-T4	1	UL 1007-AWG 22-GRN	4	-GT4	1
4	+RC-T4	2	UL 1007-AWG 22-WHT	4	-GT4	2
4	+RC-T6	1	UL 1007-AWG 22-BRN	4	-GT7	1
4	+RC-T6	2	UL 1007-AWG 22-WHT	4	-GT7	2
5	+HT-TP-M		UL 1007-AWG 16-BRN	5	+HT-COIL	
5	+XC305-X1		UL 1007-AWG 16-BRN	5	+HT-H	4
5	+HT-H	1	UL 1007-AWG 16-GRNYEL	5	+HT-PEX4	
5	+HT-COIL		UL 1007-AWG 16-BLU	5	+HT-TP-A	
5	+HT-H	3	UL 1007-AWG 16-BLU	5	+HT-TP-A	

SH1	IECCMP1	PIN1	WLAY1	SH2	IECCMP2	PIN2
5	+HT-H	4	UL 1007-AWG 16-BRN	5	+HT-TP-M	
5	+RC-D7	1	RQ 0.75mm2-BLU	5	+RC-D7	2
5	+RC-X5	1	UL 1007-AWG 22-RED	5	+XC305-X3	1
5	+RC-X5	3	UL 1007-AWG 22-YEL	5	+XC305-X3	2
5	+RC-X5	4	UL 1007-AWG 22-BLK	5	+XC305-X3	3
5	+RC-X5	6	UL 1007-AWG 22-WHT	5	+XC305-X3	4
8	+RC-I/O BUS	1	UL 1007-AWG 22-BLU	8	+EXP-I/O BUS	1
8	+RC-I/O BUS	2	UL 1007-AWG 22-RED	8	+EXP-I/O BUS	2
8	+RC-I/O BUS	3	UL 1007-AWG 22-BLK	8	+EXP-I/O BUS	3
8	+RC-EXP.	2	UL 1007-AWG 16-BRN	8	+EXP-IN	1
8	+RC-EXP.	3	UL 1007-AWG 16-BLU	8	+EXP-IN	2

1	PS-CN1 rewired to RC-MSc	2021-02-25	FROS
0		2020-05-27	KRD0
Rev	Description	Date	App

HERU 200T / 300T
Circuit diagram
Wire Run List

ART. NUMBER	DRAWING NUMBER	
4040211	C-0007100	
STATUS	APPR BY	DRAWN BY
	KRD0	FROS
DATE	REV	SHEET
16.06.2021	1	12 / 12